

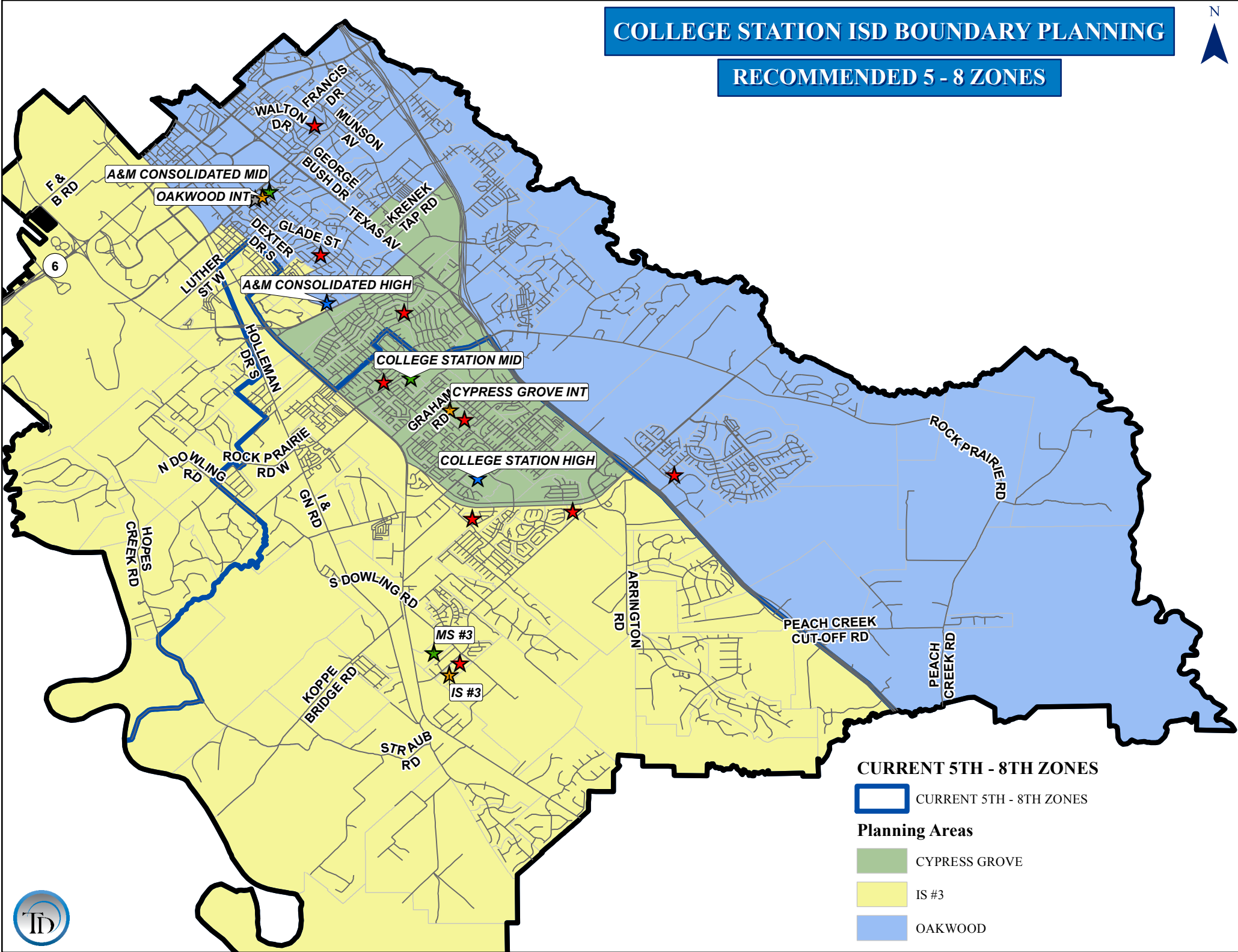
# 5/31/16 Option 1

Nantucket to **PT/MS #3/CSHS**

Continuity

# COLLEGE STATION ISD BOUNDARY PLANNING

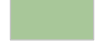


## RECOMMENDED 5 - 8 ZONES



### CURRENT 5TH - 8TH ZONES

 CURRENT 5TH - 8TH ZONES

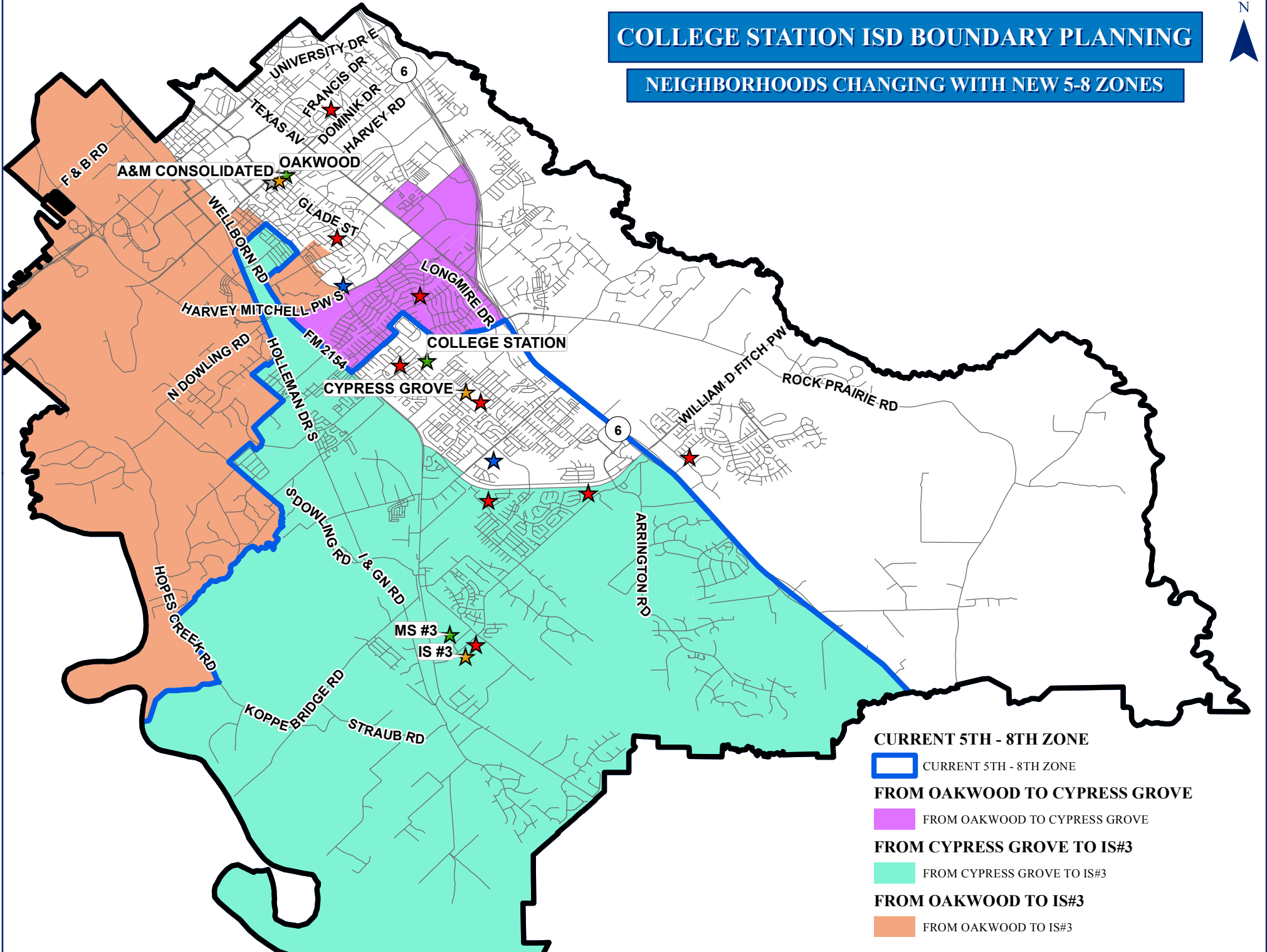
### Planning Areas

-  CYPRESS GROVE
-  IS #3
-  OAKWOOD



# COLLEGE STATION ISD BOUNDARY PLANNING

## NEIGHBORHOODS CHANGING WITH NEW 5-8 ZONES



### CURRENT 5TH - 8TH ZONE

 CURRENT 5TH - 8TH ZONE

### FROM OAKWOOD TO CYPRESS GROVE

 FROM OAKWOOD TO CYPRESS GROVE

### FROM CYPRESS GROVE TO IS#3

 FROM CYPRESS GROVE TO IS#3

### FROM OAKWOOD TO IS#3

 FROM OAKWOOD TO IS#3

# COLLEGE STATION ISD

## Recommended Intermediate & Middle School Forecast & Grade Report

SCHOOL	CAPACITY	2015/16	2016/17	2017/18	2018/19	2019/20	2020/21	2021/22	2022/23	2023/24	2024/25	2025/26
CYPRESS GROVE	920	741	755	786	852	868	859	855	870	875	882	870
IS #3	925	582	620	677	753	776	788	794	835	858	888	890
OAKWOOD	920	604	605	651	669	702	686	684	685	700	714	721
<b>TOTAL</b>	<b>2,765</b>	<b>1,927</b>	<b>1,980</b>	<b>2,114</b>	<b>2,274</b>	<b>2,346</b>	<b>2,333</b>	<b>2,333</b>	<b>2,390</b>	<b>2,433</b>	<b>2,484</b>	<b>2,481</b>

SCHOOL	5	6	TOTAL	CAPACITY	UTILIZATION	ED	%ED
CYPRESS GROVE	372	369	741	920	80.5%	260	35.1%
IS #3	307	275	582	925	62.9%	212	36.4%
OAKWOOD	302	302	604	920	65.7%	222	36.8%
<b>TOTAL</b>	<b>981</b>	<b>946</b>	<b>1,927</b>	<b>2,765</b>	<b>69.7%</b>	<b>694</b>	<b>36.0%</b>

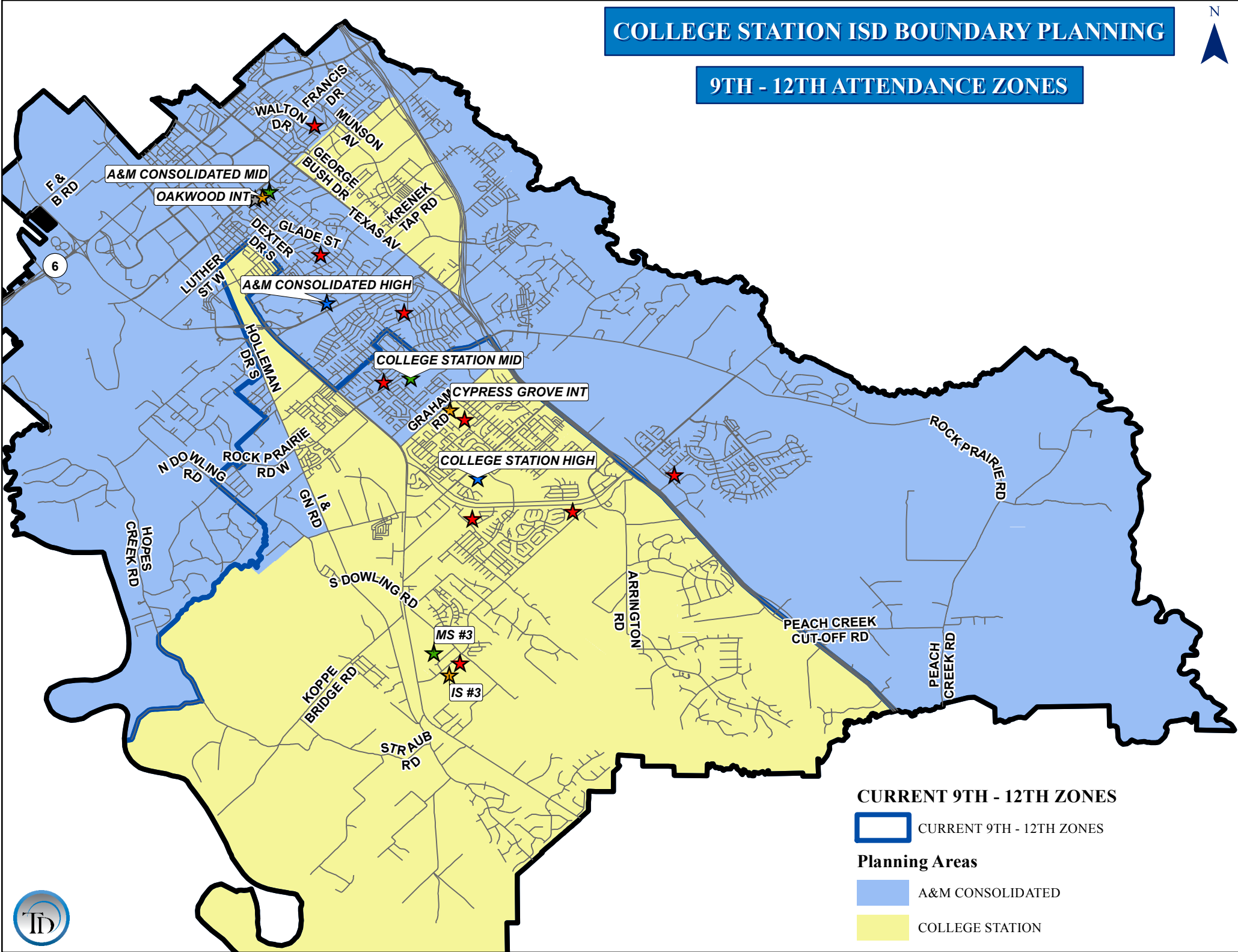
SCHOOL	CAPACITY	2015/16	2016/17	2017/18	2018/19	2019/20	2020/21	2021/22	2022/23	2023/24	2024/25	2025/26
A&M CONSOLIDATED	920	570	561	586	625	654	694	754	718	715	727	718
COLLEGE STATION	940	708	714	736	777	811	865	891	881	871	891	895
MS #3	925	542	602	678	718	815	912	936	939	958	1,002	1,018
<b>TOTAL</b>	<b>2,785</b>	<b>1,820</b>	<b>1,877</b>	<b>2,000</b>	<b>2,120</b>	<b>2,280</b>	<b>2,471</b>	<b>2,581</b>	<b>2,538</b>	<b>2,544</b>	<b>2,620</b>	<b>2,631</b>

SCHOOL	7	8	7TH-8TH	CAPACITY	UTILIZATION	ED	%ED
A&M CONSOLIDATED	294	276	570	920	62.0%	205	36.0%
COLLEGE STATION	364	344	708	940	75.3%	232	32.8%
MS #3	283	259	542	925	58.6%	180	33.2%
<b>TOTAL</b>	<b>941</b>	<b>879</b>	<b>1,820</b>	<b>2,785</b>	<b>65.4%</b>	<b>617</b>	<b>33.9%</b>

# COLLEGE STATION ISD BOUNDARY PLANNING



## 9TH - 12TH ATTENDANCE ZONES



### CURRENT 9TH - 12TH ZONES

 CURRENT 9TH - 12TH ZONES

### Planning Areas

 A&M CONSOLIDATED

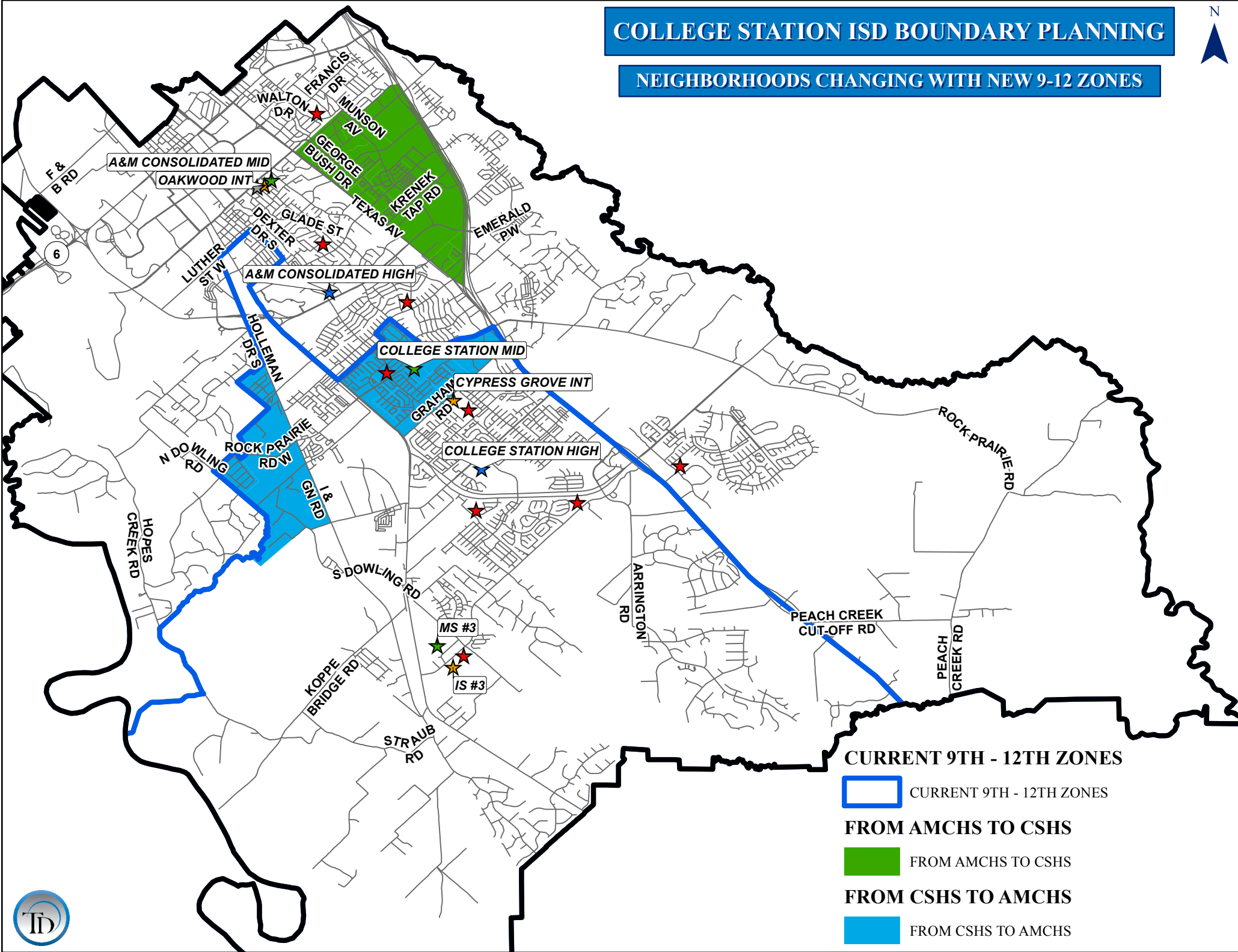
 COLLEGE STATION





# COLLEGE STATION ISD BOUNDARY PLANNING

## NEIGHBORHOODS CHANGING WITH NEW 9-12 ZONES



### CURRENT 9TH - 12TH ZONES

 CURRENT 9TH - 12TH ZONES

### FROM AMCHS TO CSHS

 FROM AMCHS TO CSHS

### FROM CSHS TO AMCHS

 FROM CSHS TO AMCHS



# COLLEGE STATION ISD

## Recommended High School Grade Report

SCHOOL	8	9	10	11	12	8TH-11TH	9TH-12TH	CAPACITY	UTILIZATION	ED	%ED
A&M CONSOLIDATED	453	505	439	463	430	1,860	1,837	2,400	76.5%	543	29.6%
COLLEGE STATION	426	485	504	407	351	1,822	1,747	1,800	97.1%	507	29.0%
<b>TOTAL</b>	<b>879</b>	<b>990</b>	<b>943</b>	<b>870</b>	<b>781</b>	<b>3,682</b>	<b>3,584</b>	<b>4,200</b>	<b>85.3%</b>	<b>1,050</b>	<b>29.3%</b>

# COLLEGE STATION ISD

## Recommended High School Forecast Report

SCHOOL	2015/16	2016/17	2017/18	2018/19	2019/20	2020/21	2021/22	2022/23	2023/24	2024/25	2025/26
A&M CONSOLIDATED	1,786	1,765	1,965	2,026	2,110	2,216	2,335	2,487	2,621	2,739	2,791
COLLEGE STATION	1,747	1,859	1,873	1,982	2,141	2,289	2,477	2,652	2,804	2,934	3,029
<b>TOTAL</b>	<b>3,531</b>	<b>3,624</b>	<b>3,838</b>	<b>4,008</b>	<b>4,251</b>	<b>4,505</b>	<b>4,812</b>	<b>5,139</b>	<b>5,425</b>	<b>5,673</b>	<b>5,820</b>

**MIDDLE SCHOOL FEEDER REPORT**

<b>MIDDLE SCHOOL TO HIGH SCHOOL ZONE</b>	<b>7th GRADE</b>	<b>8th GRADE</b>	<b>7 - 8 TOTAL</b>	<b>7th GRADE %</b>	<b>8th GRADE %</b>	<b>7-8 GRADE %</b>
<b>A&amp;M CONSOLIDATED MIDDLE</b>	294	276	570			
A&M CONSOLIDATED HIGH	251	229	<b>480</b>	85%	83%	<b>84%</b>
COLLEGE STATION HIGH	43	47	<b>90</b>	15%	17%	<b>16%</b>
<b>COLLEGE STATION MIDDLE</b>	364	344	708			
A&M CONSOLIDATED HIGH	168	170	<b>338</b>	46%	49%	<b>48%</b>
COLLEGE STATION HIGH	196	174	<b>370</b>	54%	51%	<b>52%</b>
<b>MS #3</b>	283	259	542			
A&M CONSOLIDATED HIGH	44	54	<b>98</b>	16%	21%	<b>18%</b>
COLLEGE STATION HIGH	239	205	<b>444</b>	84%	79%	<b>82%</b>



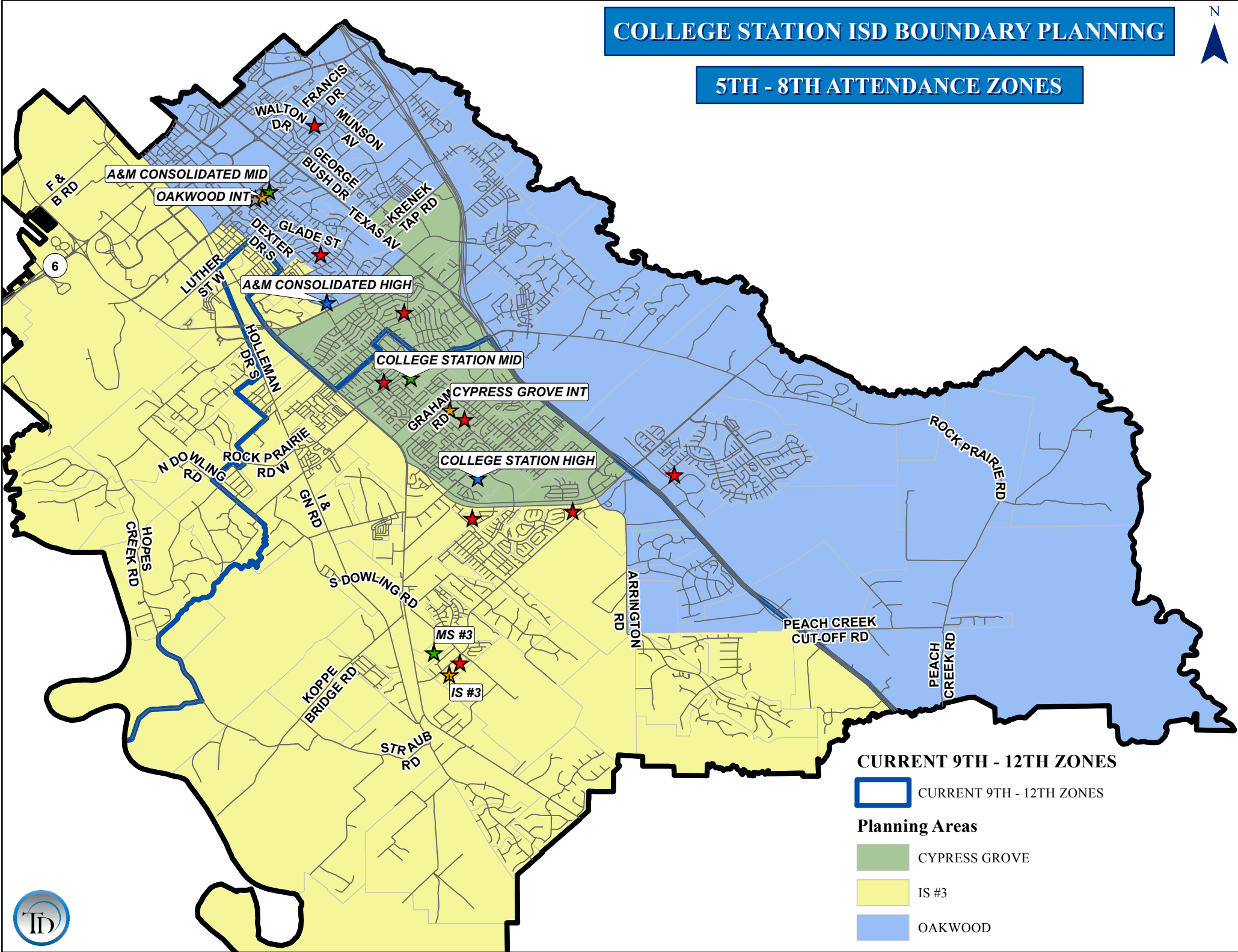
**5/31/16 Option 2  
(Initial Recommendation)**

Nantucket to **OW/AMCMS** then to  
**CSHS**

# COLLEGE STATION ISD BOUNDARY PLANNING



## 5TH - 8TH ATTENDANCE ZONES



CURRENT 9TH - 12TH ZONES

 CURRENT 9TH - 12TH ZONES

Planning Areas

 CYPRESS GROVE

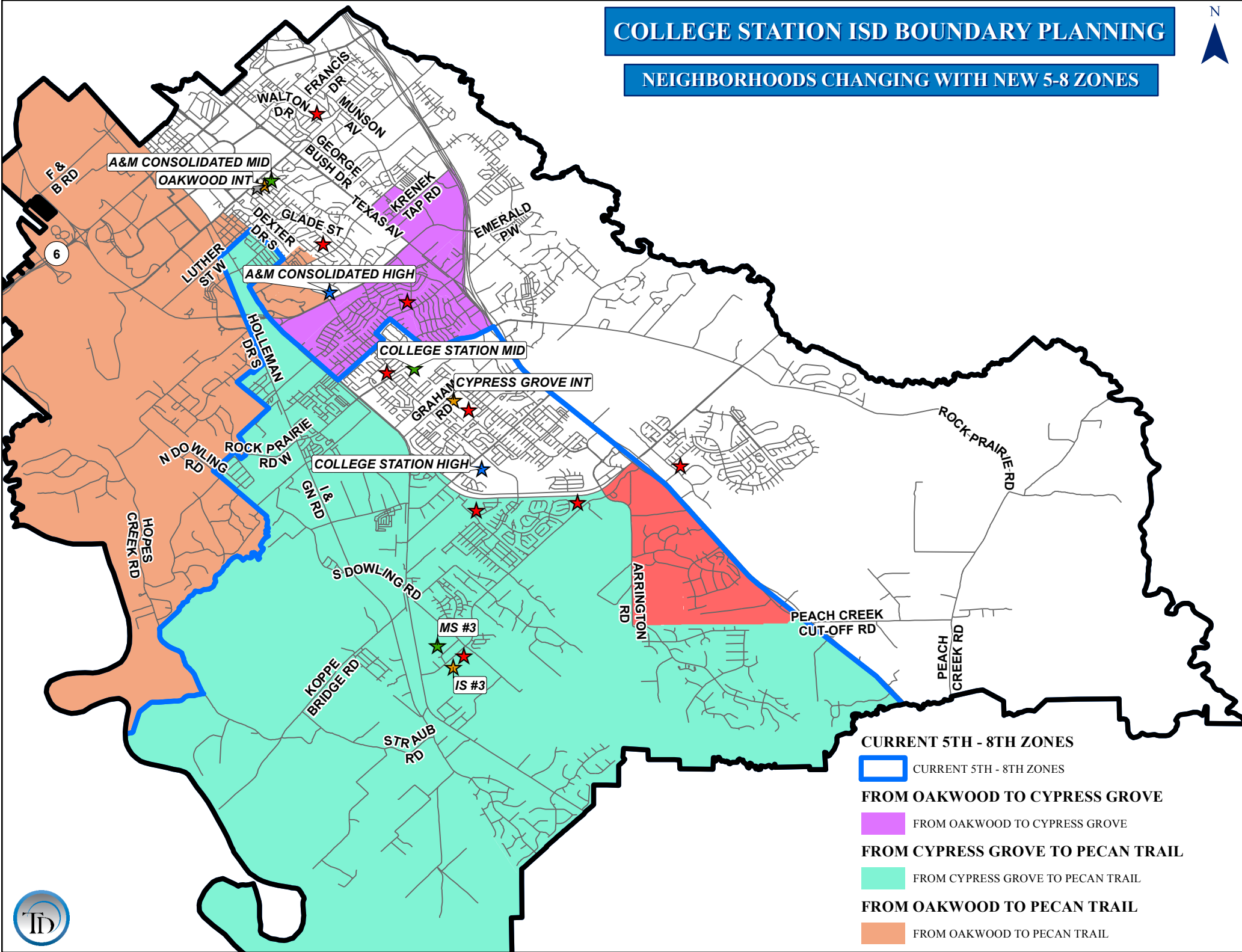
 IS #3

 OAKWOOD



# COLLEGE STATION ISD BOUNDARY PLANNING

## NEIGHBORHOODS CHANGING WITH NEW 5-8 ZONES



# COLLEGE STATION ISD

## Intermediate & Middle School School Forecast Report/Grade Report

SCHOOL	CAPACITY	2015/16	2016/17	2017/18	2018/19	2019/20	2020/21	2021/22	2022/23	2023/24	2024/25	2025/26
CYPRESS GROVE	920	741	755	786	852	868	859	855	870	875	882	870
IS #3	925	563	601	658	732	755	767	773	813	836	866	868
OAKWOOD	920	623	624	670	690	723	707	705	707	722	736	743
<b>TOTAL</b>	<b>2,765</b>	<b>1,927</b>	<b>1,980</b>	<b>2,114</b>	<b>2,274</b>	<b>2,346</b>	<b>2,333</b>	<b>2,333</b>	<b>2,390</b>	<b>2,433</b>	<b>2,484</b>	<b>2,481</b>

SCHOOL	5	6	TOTAL	CAPACITY	UTILIZATION	ED	%ED
CYPRESS GROVE	372	369	741	920	80.5%	260	35.1%
IS #3	298	265	563	925	60.9%	212	37.7%
OAKWOOD	311	312	623	920	67.7%	222	35.6%
<b>TOTAL</b>	<b>981</b>	<b>946</b>	<b>1,927</b>	<b>2,765</b>	<b>69.7%</b>	<b>694</b>	<b>36.0%</b>

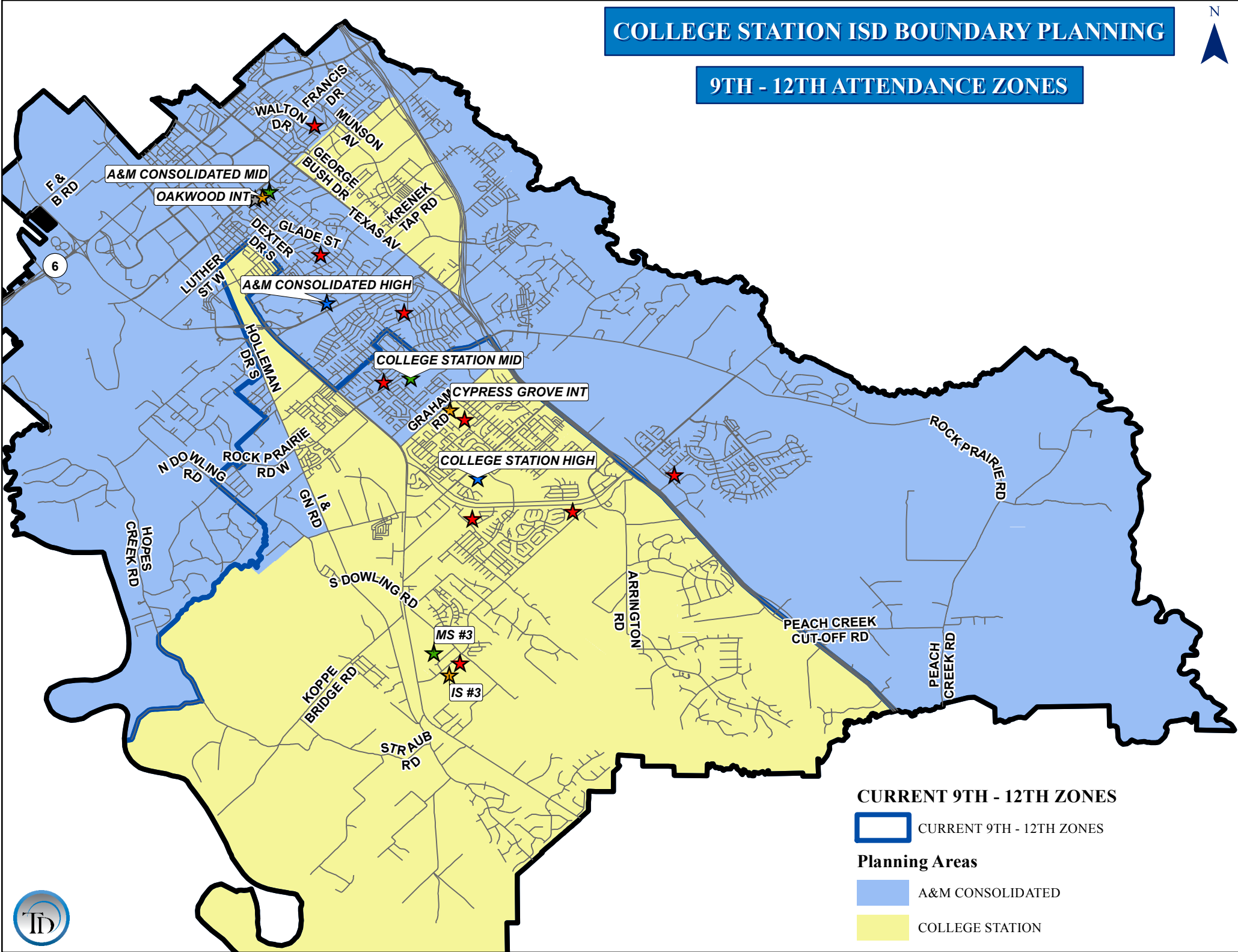
SCHOOL	CAPACITY	2015/16	2016/17	2017/18	2018/19	2019/20	2020/21	2021/22	2022/23	2023/24	2024/25	2025/26
A&M CONSOLIDATED	920	594	586	612	652	684	727	787	751	748	761	752
COLLEGE STATION	940	708	714	736	777	811	865	891	881	871	891	895
MS #3	925	518	577	652	691	785	879	903	906	925	968	984
<b>TOTAL</b>	<b>2,785</b>	<b>1,820</b>	<b>1,877</b>	<b>2,000</b>	<b>2,120</b>	<b>2,280</b>	<b>2,471</b>	<b>2,581</b>	<b>2,538</b>	<b>2,544</b>	<b>2,620</b>	<b>2,631</b>

SCHOOL	7	8	7TH-8TH	CAPACITY	UTILIZATION	ED	%ED
A&M CONSOLIDATED	309	285	594	920	64.6%	207	34.8%
COLLEGE STATION	364	344	708	940	75.3%	232	32.8%
MS #3	268	250	518	925	56.0%	178	34.4%
<b>TOTAL</b>	<b>941</b>	<b>879</b>	<b>1,820</b>	<b>2,785</b>	<b>65.4%</b>	<b>617</b>	<b>33.9%</b>

# COLLEGE STATION ISD BOUNDARY PLANNING



## 9TH - 12TH ATTENDANCE ZONES



### CURRENT 9TH - 12TH ZONES

 CURRENT 9TH - 12TH ZONES

### Planning Areas

 A&M CONSOLIDATED

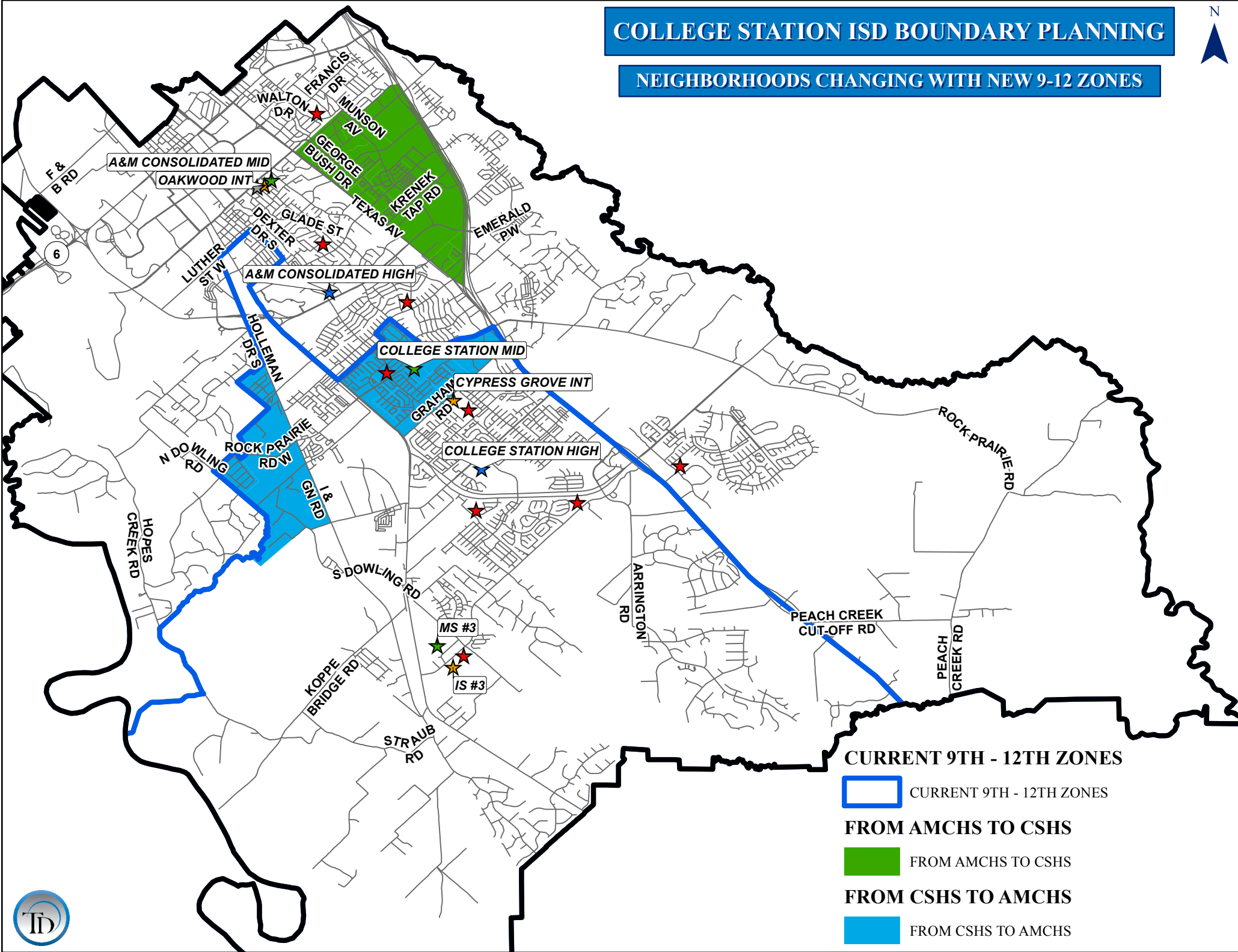
 COLLEGE STATION





# COLLEGE STATION ISD BOUNDARY PLANNING

## NEIGHBORHOODS CHANGING WITH NEW 9-12 ZONES



### CURRENT 9TH - 12TH ZONES

 CURRENT 9TH - 12TH ZONES

### FROM AMCHS TO CSHS

 FROM AMCHS TO CSHS

### FROM CSHS TO AMCHS

 FROM CSHS TO AMCHS





# COLLEGE STATION ISD

## Recommended High School Grade Report

SCHOOL	8	9	10	11	12	8TH-11TH	9TH-12TH	CAPACITY	UTILIZATION	ED	%ED
A&M CONSOLIDATED	453	505	439	463	430	1,860	1,837	2,400	76.5%	543	29.6%
COLLEGE STATION	426	485	504	407	351	1,822	1,747	1,800	97.1%	507	29.0%
<b>TOTAL</b>	<b>879</b>	<b>990</b>	<b>943</b>	<b>870</b>	<b>781</b>	<b>3,682</b>	<b>3,584</b>	<b>4,200</b>	<b>85.3%</b>	<b>1,050</b>	<b>29.3%</b>

# COLLEGE STATION ISD

## Recommended High School Forecast Report

SCHOOL	2015/16	2016/17	2017/18	2018/19	2019/20	2020/21	2021/22	2022/23	2023/24	2024/25	2025/26
A&M CONSOLIDATED	1,786	1,765	1,965	2,026	2,110	2,216	2,335	2,487	2,621	2,739	2,791
COLLEGE STATION	1,747	1,859	1,873	1,982	2,141	2,289	2,477	2,652	2,804	2,934	3,029
<b>TOTAL</b>	<b>3,531</b>	<b>3,624</b>	<b>3,838</b>	<b>4,008</b>	<b>4,251</b>	<b>4,505</b>	<b>4,812</b>	<b>5,139</b>	<b>5,425</b>	<b>5,673</b>	<b>5,820</b>

### MIDDLE SCHOOL FEEDER REPORT

MIDDLE SCHOOL TO HIGH SCHOOL ZONE	7th GRADE	8th GRADE	7 - 8 TOTAL	7th GRADE %	8th GRADE %	7-8 GRADE %
<b>A&amp;M CONSOLIDATED MIDDLE</b>	309	285	594			
A&M CONSOLIDATED HIGH	251	229	<b>480</b>	81%	80%	<b>81%</b>
COLLEGE STATION HIGH	58	56	<b>114</b>	19%	20%	<b>19%</b>
<b>COLLEGE STATION MIDDLE</b>						
COLLEGE STATION MIDDLE	364	344	708			
A&M CONSOLIDATED HIGH	168	170	<b>338</b>	46%	49%	<b>48%</b>
COLLEGE STATION HIGH	196	174	<b>370</b>	54%	51%	<b>52%</b>
<b>MS #3</b>						
MS #3	268	250	518			
A&M CONSOLIDATED HIGH	44	54	<b>98</b>	16%	22%	<b>19%</b>
COLLEGE STATION HIGH	224	196	<b>420</b>	84%	78%	<b>81%</b>

# 9/12/16 Option 3

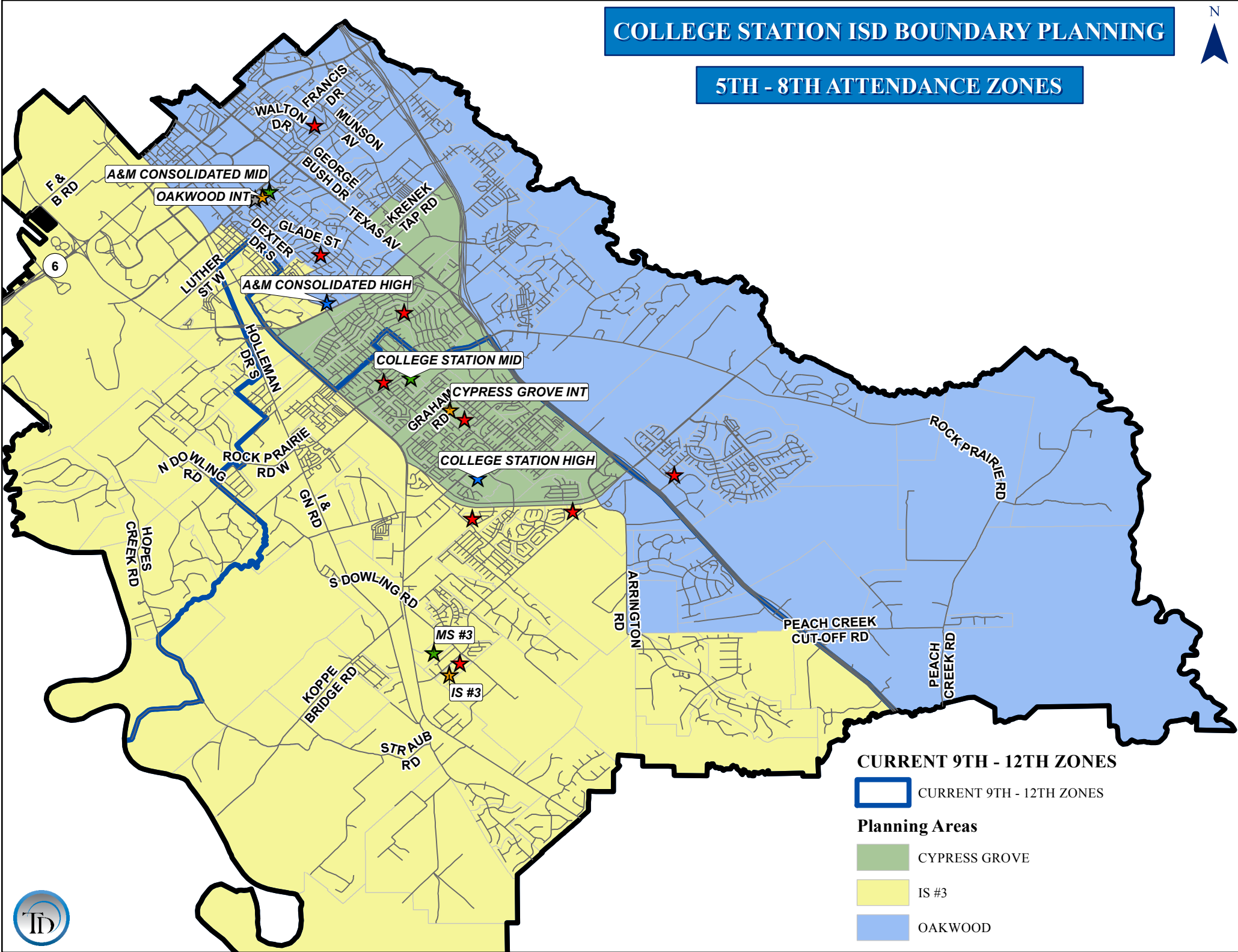
Nantucket to **OW/AMCMS/Consol**

Continuity

# COLLEGE STATION ISD BOUNDARY PLANNING



## 5TH - 8TH ATTENDANCE ZONES



CURRENT 9TH - 12TH ZONES

 CURRENT 9TH - 12TH ZONES

Planning Areas

 CYPRESS GROVE

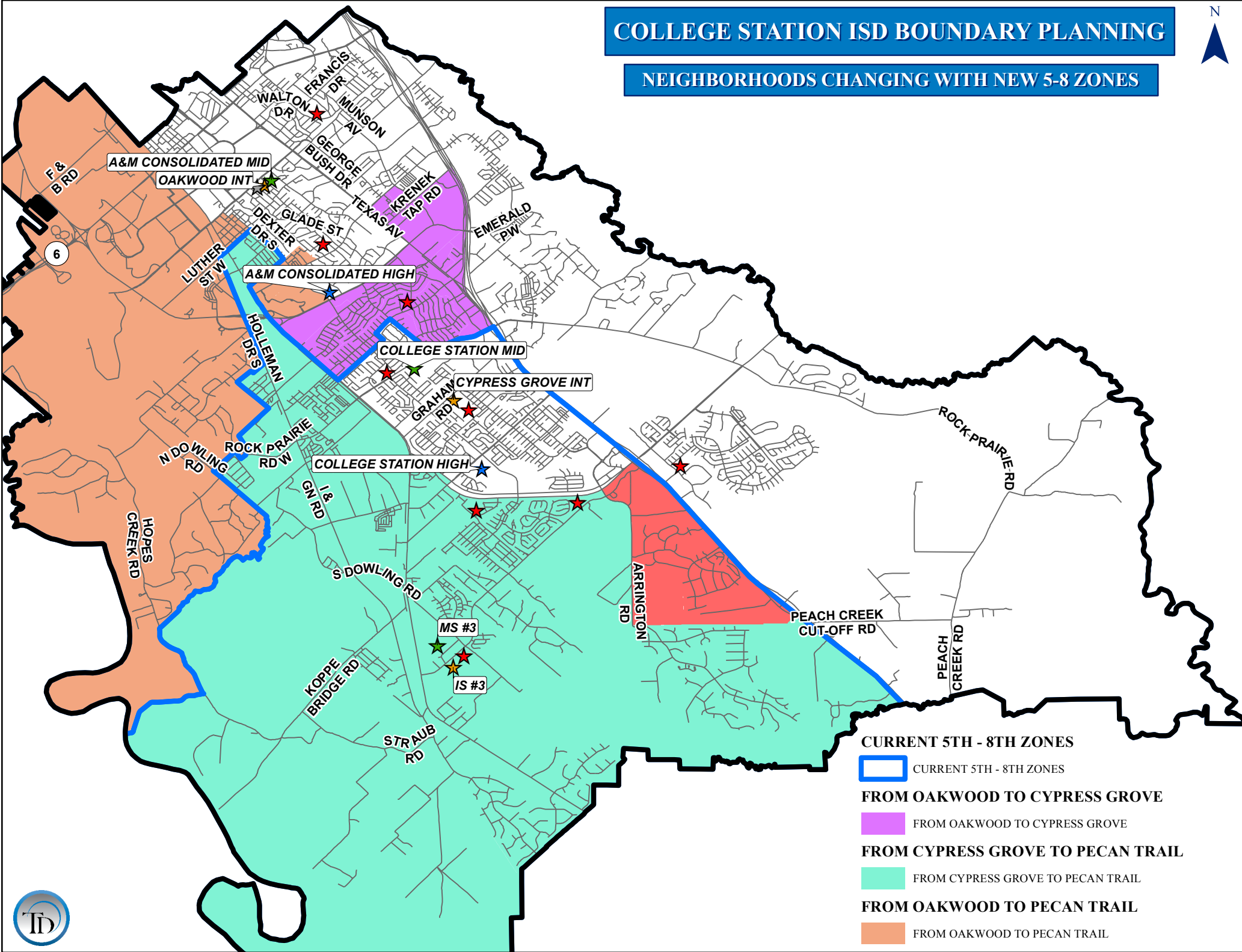
 IS #3

 OAKWOOD



# COLLEGE STATION ISD BOUNDARY PLANNING

## NEIGHBORHOODS CHANGING WITH NEW 5-8 ZONES



# COLLEGE STATION ISD

## Intermediate & Middle School School Forecast Report/Grade Report

SCHOOL	CAPACITY	2015/16	2016/17	2017/18	2018/19	2019/20	2020/21	2021/22	2022/23	2023/24	2024/25	2025/26
CYPRESS GROVE	920	741	755	786	852	868	859	855	870	875	882	870
IS #3	925	563	601	658	732	755	767	773	813	836	866	868
OAKWOOD	920	623	624	670	690	723	707	705	707	722	736	743
<b>TOTAL</b>	<b>2,765</b>	<b>1,927</b>	<b>1,980</b>	<b>2,114</b>	<b>2,274</b>	<b>2,346</b>	<b>2,333</b>	<b>2,333</b>	<b>2,390</b>	<b>2,433</b>	<b>2,484</b>	<b>2,481</b>

SCHOOL	5	6	TOTAL	CAPACITY	UTILIZATION	ED	%ED
CYPRESS GROVE	372	369	741	920	80.5%	260	35.1%
IS #3	298	265	563	925	60.9%	212	37.7%
OAKWOOD	311	312	623	920	67.7%	222	35.6%
<b>TOTAL</b>	<b>981</b>	<b>946</b>	<b>1,927</b>	<b>2,765</b>	<b>69.7%</b>	<b>694</b>	<b>36.0%</b>

SCHOOL	CAPACITY	2015/16	2016/17	2017/18	2018/19	2019/20	2020/21	2021/22	2022/23	2023/24	2024/25	2025/26
A&M CONSOLIDATED	920	594	586	612	652	684	727	787	751	748	761	752
COLLEGE STATION	940	708	714	736	777	811	865	891	881	871	891	895
MS #3	925	518	577	652	691	785	879	903	906	925	968	984
<b>TOTAL</b>	<b>2,785</b>	<b>1,820</b>	<b>1,877</b>	<b>2,000</b>	<b>2,120</b>	<b>2,280</b>	<b>2,471</b>	<b>2,581</b>	<b>2,538</b>	<b>2,544</b>	<b>2,620</b>	<b>2,631</b>

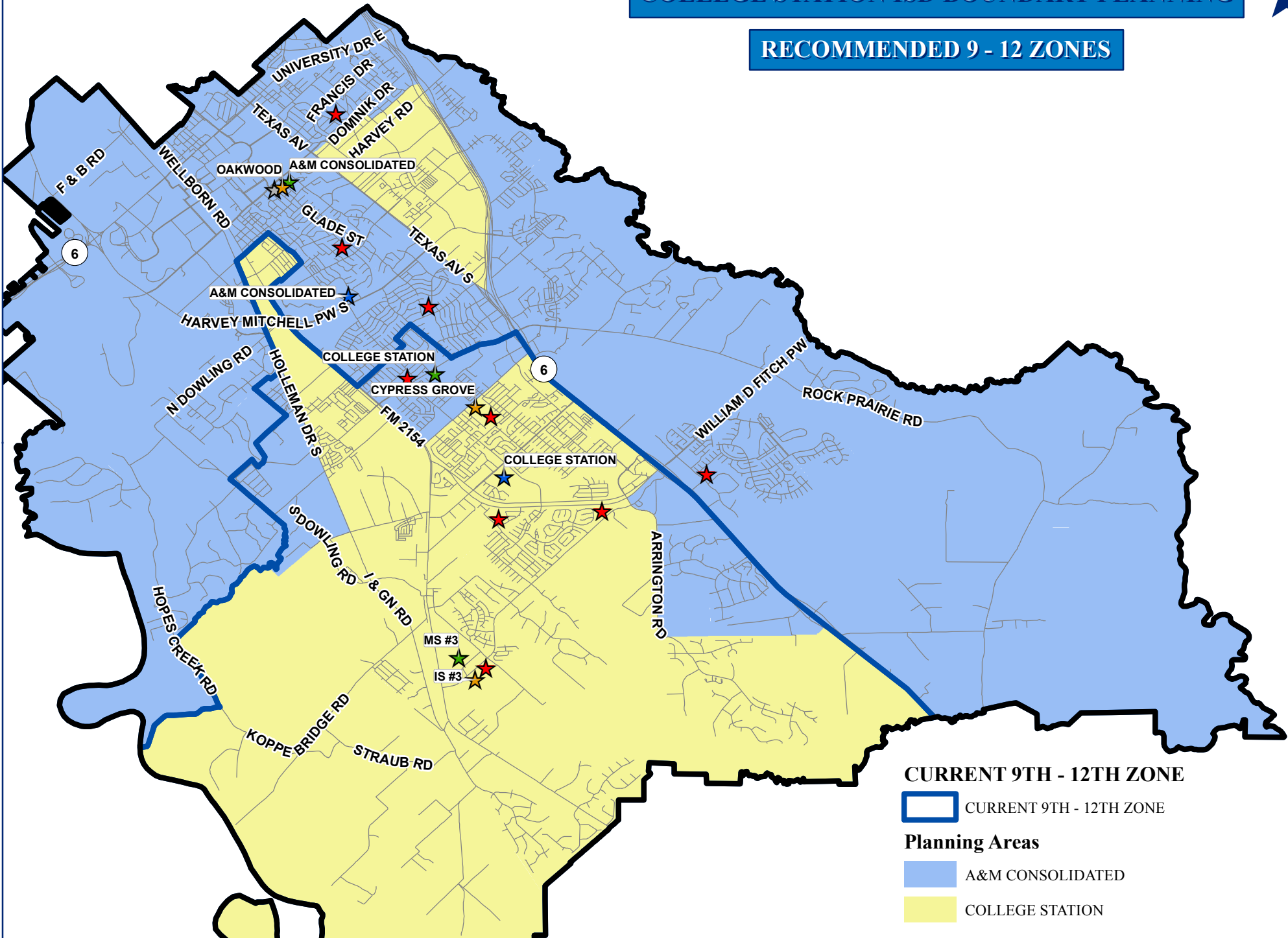
SCHOOL	7	8	7TH-8TH	CAPACITY	UTILIZATION	ED	%ED
A&M CONSOLIDATED	309	285	594	920	64.6%	207	34.8%
COLLEGE STATION	364	344	708	940	75.3%	232	32.8%
MS #3	268	250	518	925	56.0%	178	34.4%
<b>TOTAL</b>	<b>941</b>	<b>879</b>	<b>1,820</b>	<b>2,785</b>	<b>65.4%</b>	<b>617</b>	<b>33.9%</b>



# COLLEGE STATION ISD BOUNDARY PLANNING

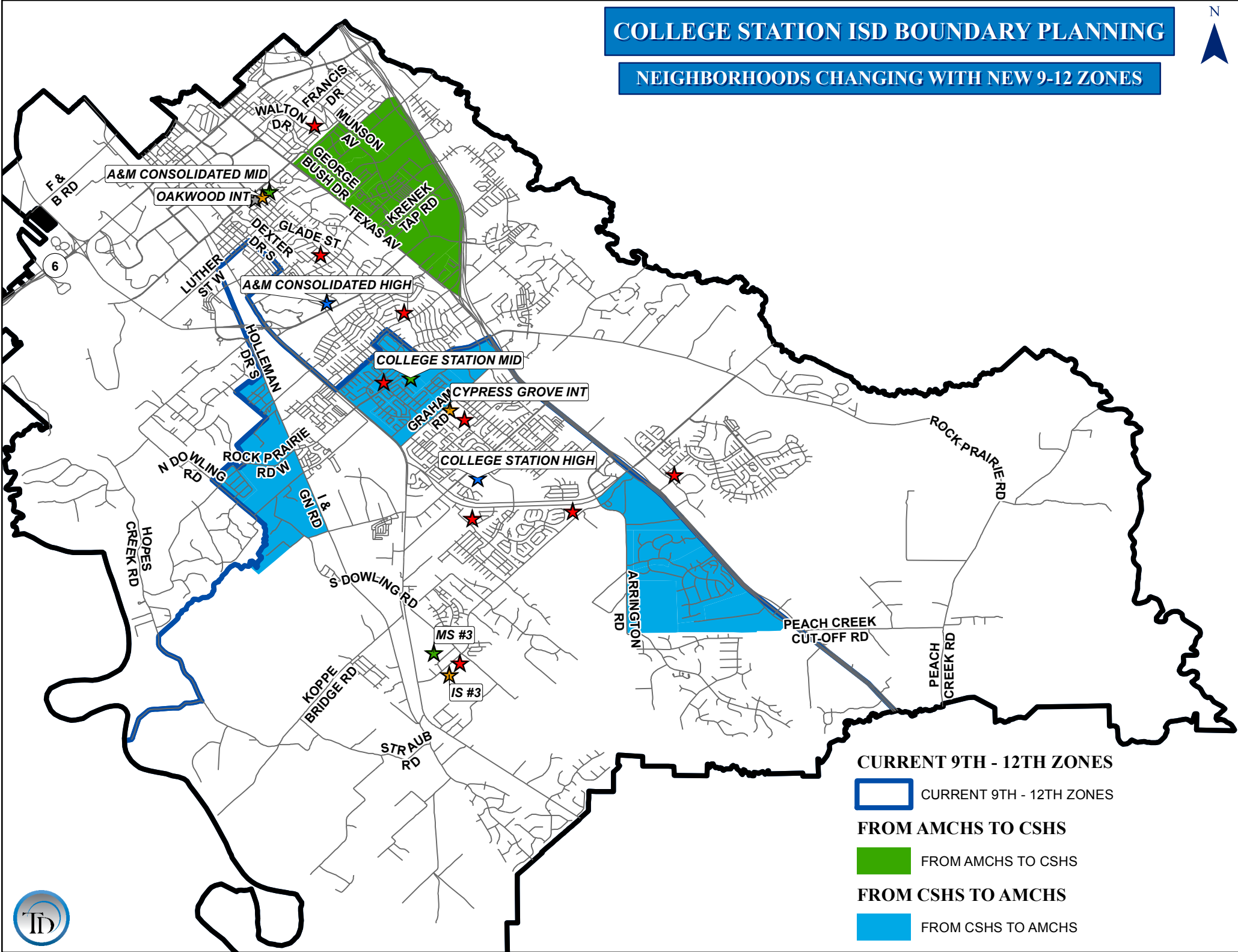


## RECOMMENDED 9 - 12 ZONES






# COLLEGE STATION ISD BOUNDARY PLANNING

## NEIGHBORHOODS CHANGING WITH NEW 9-12 ZONES



### CURRENT 9TH - 12TH ZONES

-  CURRENT 9TH - 12TH ZONES
-  FROM AMCHS TO CSHS
-  FROM CSHS TO AMCHS



# COLLEGE STATION ISD

## Recommended High School Forecast & Grade Report

SCHOOL	CAPACITY	CURRENT	2016/17	2017/18	2018/19	2019/20	2020/21	2021/22	2022/23	2023/24	2024/25	2025/26
A&M CONSOLIDATED	2,400	1,786	1,733	2,008	2,070	2,157	2,267	2,390	2,545	2,681	2,801	2,857
COLLEGE STATION	1,800	1,745	1,859	1,830	1,938	2,094	2,238	2,422	2,594	2,744	2,872	2,963
<b>TOTAL</b>	<b>4,200</b>	<b>3,531</b>	<b>3,592</b>	<b>3,838</b>	<b>4,008</b>	<b>4,251</b>	<b>4,505</b>	<b>4,812</b>	<b>5,139</b>	<b>5,425</b>	<b>5,673</b>	<b>5,820</b>

## Recommended High School Grade Report

SCHOOL	8	9	10	11	12	8TH-11TH	9TH-12TH	CAPACITY	UTILIZATION	ED	%ED
A&M CONSOLIDATED	462	513	453	474	440	1,902	1,880	2,400	78.3%	546	29.0%
COLLEGE STATION	417	477	490	396	341	1,780	1,704	1,800	94.7%	504	29.6%
<b>TOTAL</b>	<b>879</b>	<b>990</b>	<b>943</b>	<b>870</b>	<b>781</b>	<b>3,682</b>	<b>3,584</b>	<b>4,200</b>	<b>85.3%</b>	<b>1,050</b>	<b>29.3%</b>

**ALTERNATE ZONES MIDDLE SCHOOL FEEDER REPORT**

<b>MIDDLE SCHOOL TO HIGH SCHOOL ZONE</b>	<b>7th GRADE</b>	<b>8th GRADE</b>	<b>7 - 8 TOTAL</b>	<b>7th GRADE %</b>	<b>8th GRADE %</b>	<b>7-8 GRADE %</b>
<b>A&amp;M CONSOLIDATED MIDDLE</b>	309	285	594			
A&M CONSOLIDATED HIGH	266	238	<b>504</b>	86%	84%	<b>85%</b>
COLLEGE STATION HIGH	43	47	<b>90</b>	14%	16%	<b>15%</b>
<b>COLLEGE STATION MIDDLE</b>						
COLLEGE STATION MIDDLE	364	344	708			
A&M CONSOLIDATED HIGH	168	170	<b>338</b>	46%	49%	<b>48%</b>
COLLEGE STATION HIGH	196	174	<b>370</b>	54%	51%	<b>52%</b>
<b>MS #3</b>						
MS #3	268	250	518			
A&M CONSOLIDATED HIGH	44	54	<b>98</b>	16%	22%	<b>19%</b>
COLLEGE STATION HIGH	224	196	<b>420</b>	84%	78%	<b>81%</b>