



HIGH SCHOOL BOUNDARY ADJUSTMENT

April 19, 2018
Board Workshop

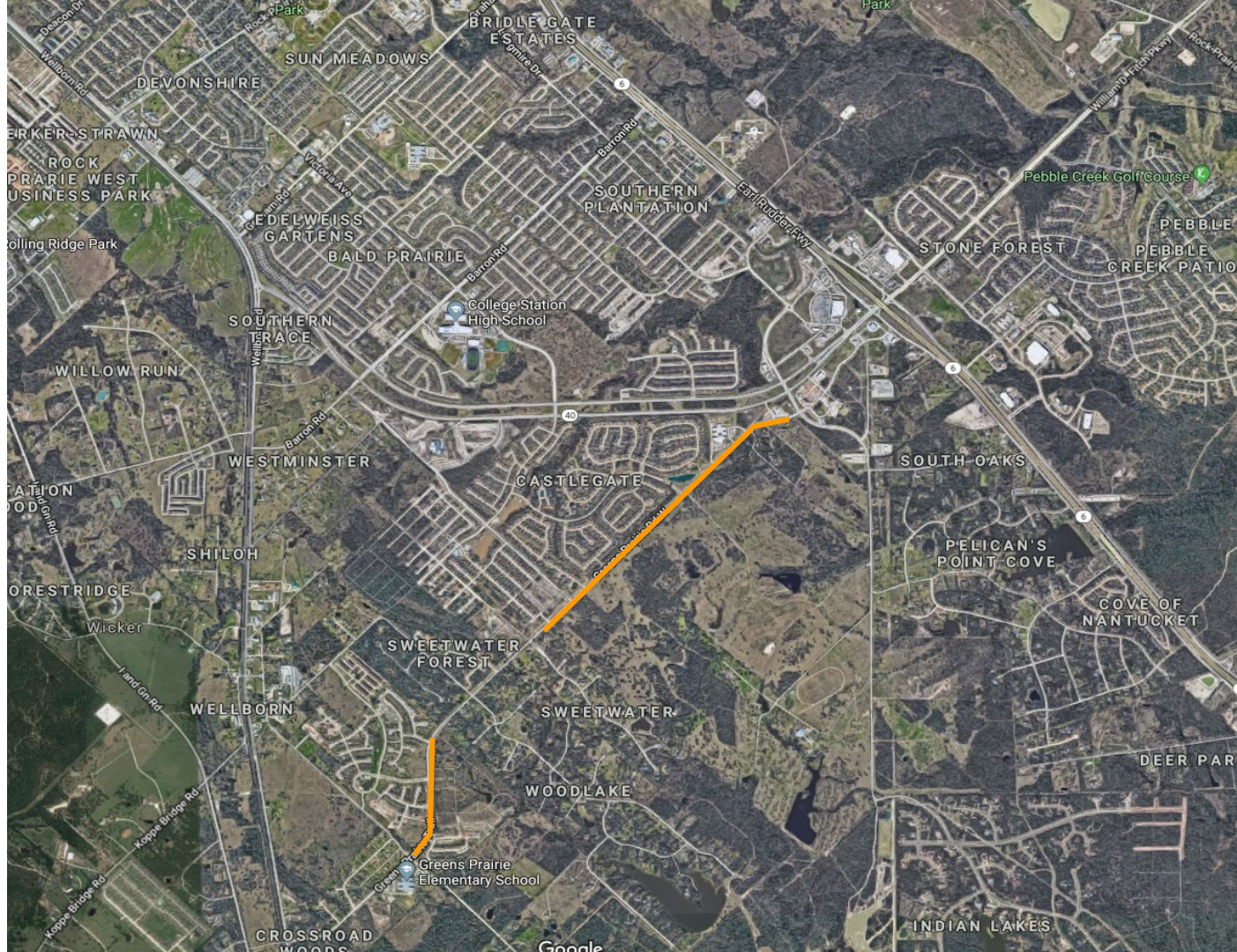


INFO REQUESTS

ROAD CONSTRUCTION

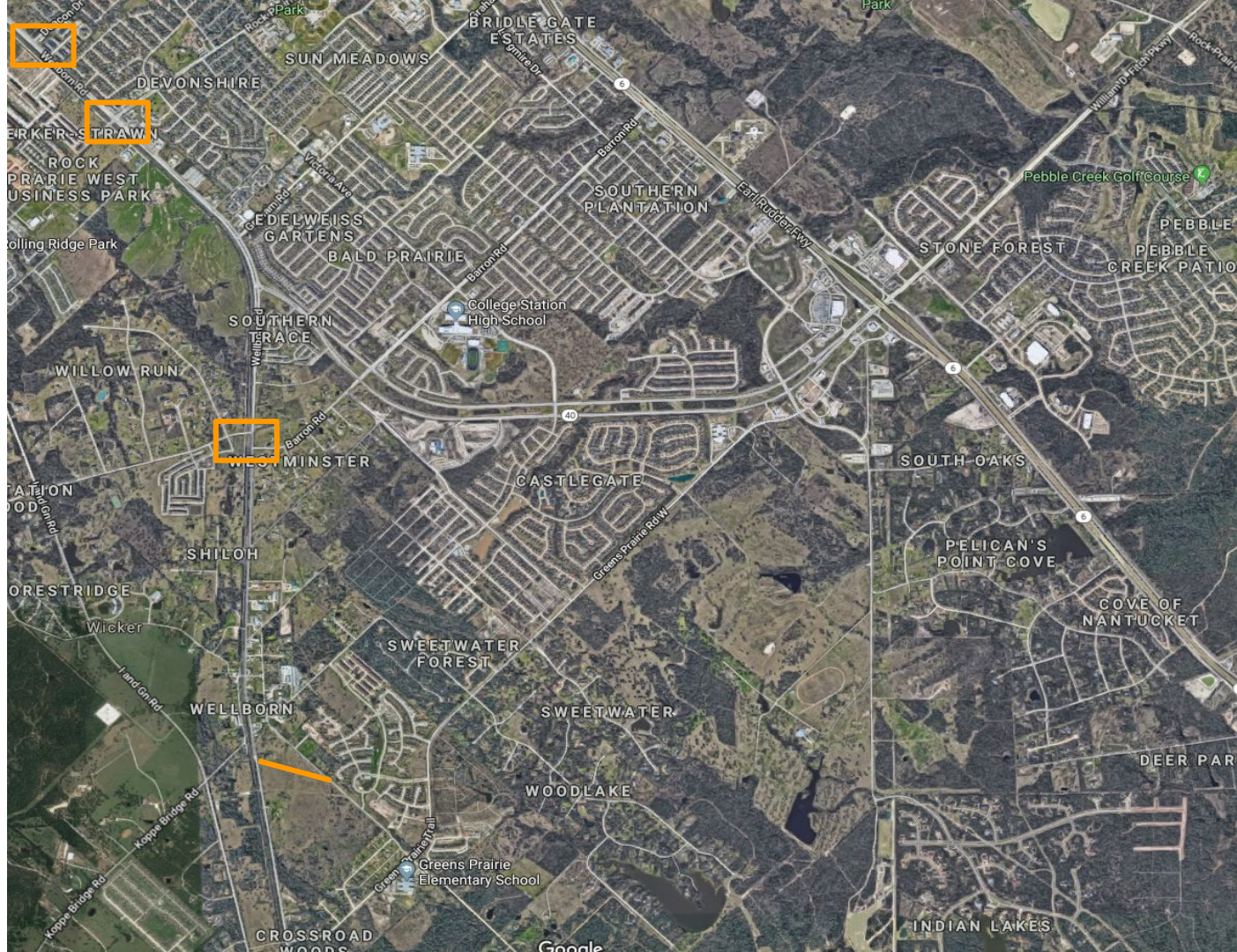
CITY of CS

- Signal at Greens Prairie Rd and Arrington which should be complete in the summer
- Project to widen Greens Prairie Rd from Arrington heading west to the city limit line (west of Castlegate 2) and then again through Creek Meadows from the city limits to Royder Rd. (will look like what is in front of Pecan Trail)
 - construction currently scheduled for FY 2020 (Oct. 1, 2019) - entire project 18 -24 months



ROAD CONSTRUCTION

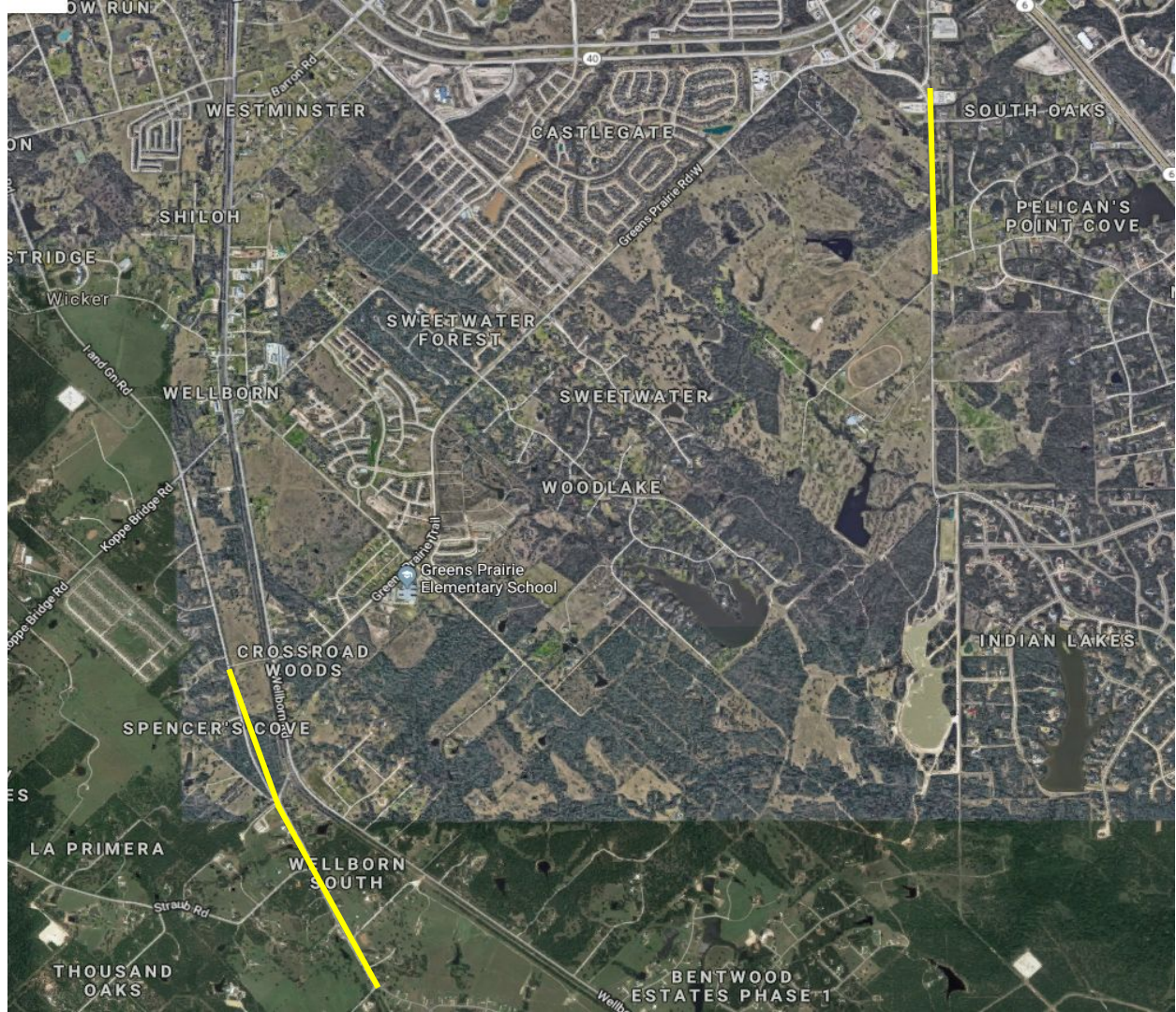
- **Wellborn Corridor (intersection like GPT/Wellborn Rd.)**
 - **Moving the crossing at Capstone to Barron Rd - anticipate construction in 2020 - signalized intersection**
 - **Improving the crossing at Rock Prairie and road improvement (widening) - anticipate construction starting ~Spring 2019***
 - **Moving the Cain crossing to Deacon - anticipate construction starting ~Spring 2019* - signalized intersection**
 - **Tying a newly realigned Royder Rd into Wellborn with a signalized intersection (just north of Wellborn Middle School) - anticipate construction starting ~Spring 2019***



ROAD CONSTRUCTION

BRAZOS COUNTY

- Opening Mesa Verde from Indian Lakes to HWY 6 frontage Rd.
- Arrington Rd. from city limits to just past Harpers Ferry - hope to get started later this summer - project 5 - 6 months -closed to thru traffic - improving drainage, striping, widening
- I&GN, Straub, Stousland from the entrance of Saddle Creek to Greens Prairie Trl. Intersection - start Spring 2019 -project 5 - 6 months - straightening out, improving drainage, striping, widening





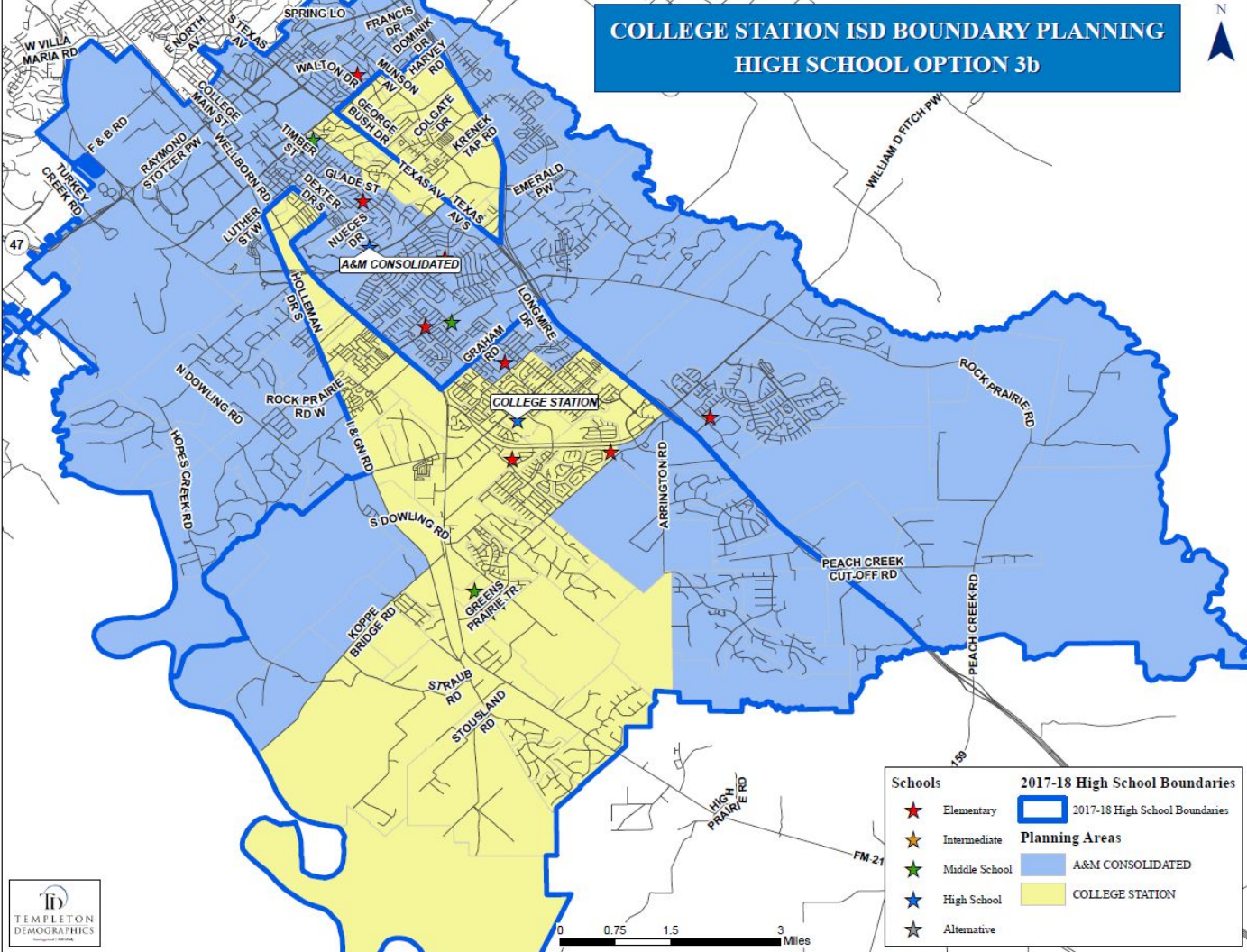
ADDITIONAL 2 OPTIONS

From 4/9/18 Meeting



OPTION 3b

COLLEGE STATION ISD BOUNDARY PLANNING HIGH SCHOOL OPTION 3b



| Schools | | 2017-18 High School Boundaries | |
|---------|---------------|--------------------------------|--------------------------------|
| | Elementary | | 2017-18 High School Boundaries |
| | Intermediate | Planning Areas | |
| | Middle School | | A&M CONSOLIDATED |
| | High School | | COLLEGE STATION |
| | Alternative | | |



OPTION 3b

COLLEGE STATION ISD

Plan 3b High School Grade Report

| SCHOOL | 8 | 9 | 10 | 11 | 12 | 8TH-11TH | 9TH-12TH | CAPACITY | UTILIZATION | ED | %ED |
|------------------|-----|-----|-----|-----|-----|----------|----------|----------|-------------|-----|-------|
| A&M CONSOLIDATED | 542 | 484 | 487 | 469 | 501 | 1,982 | 1,941 | 2,350 | 82.6% | 589 | 30.3% |
| COLLEGE STATION | 421 | 510 | 428 | 431 | 414 | 1,790 | 1,783 | 1,950 | 91.4% | 481 | 27.0% |

3.3%

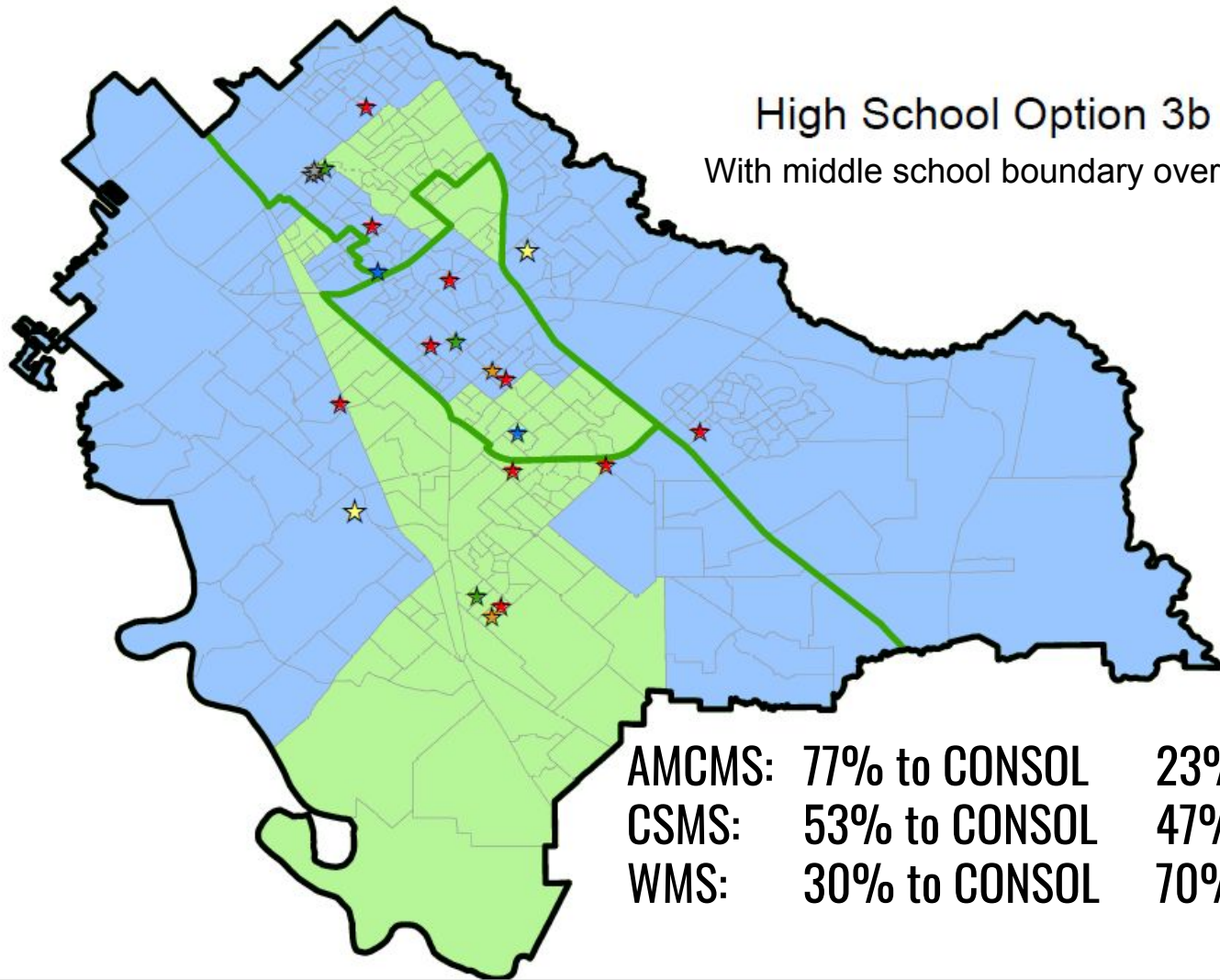
COLLEGE STATION ISD

Plan 3b High School Forecast

| SCHOOL | CAPACITY | Bond - CSHS | | | | | Bond - HS #3 | | | | |
|------------------|----------|-------------|---------|---------|---------|---------|--------------|---------|---------|---------|--|
| | | 2019/20 | 2020/21 | 2021/22 | 2022/23 | 2023/24 | 2024/25 | 2025/26 | 2026/27 | 2027/28 | |
| A&M CONSOLIDATED | 2,350 | 2,011 | 2,095 | 2,246 | 2,361 | 2,497 | 2,606 | 2,664 | 2,685 | 2,713 | |
| COLLEGE STATION | 1,950 | 1,934 | 1,964 | 2,047 | 2,205 | 2,277 | ★2,378 | 2,374 | 2,427 | 2,450 | |

High School Option 3b

With middle school boundary overlay



| | | |
|--------|---------------|-------------|
| AMCMS: | 77% to CONSOL | 23% to CSHS |
| CSMS: | 53% to CONSOL | 47% to CSHS |
| WMS: | 30% to CONSOL | 70% to CSHS |

PROJECTED TRANSPORTATION IMPACT - OPTION 3b

| AREA | CURRENT ROUTES | ADDED ROUTES w THIS OPTION | ADDED ROUTES 2019 GROWTH* | NET ADDS | TOTAL COSTS (@\$20 K/ ROUTE) |
|-------------------|----------------|----------------------------|---------------------------|----------|------------------------------|
| ANDERSON ST | 0 | 2 | 0 | 2 | \$40 K |
| MID TOWN | 0 | 1 HS ONLY | 0 | 1 | \$20 K |
| WEST SIDE | 1 IS/MS/HS | 1 HS | 0 | 1 | \$20 K |
| INDIAN LAKES AREA | 2 IS/MS/HS | 1 HS ONLY | 0 | 1 | \$20 K |

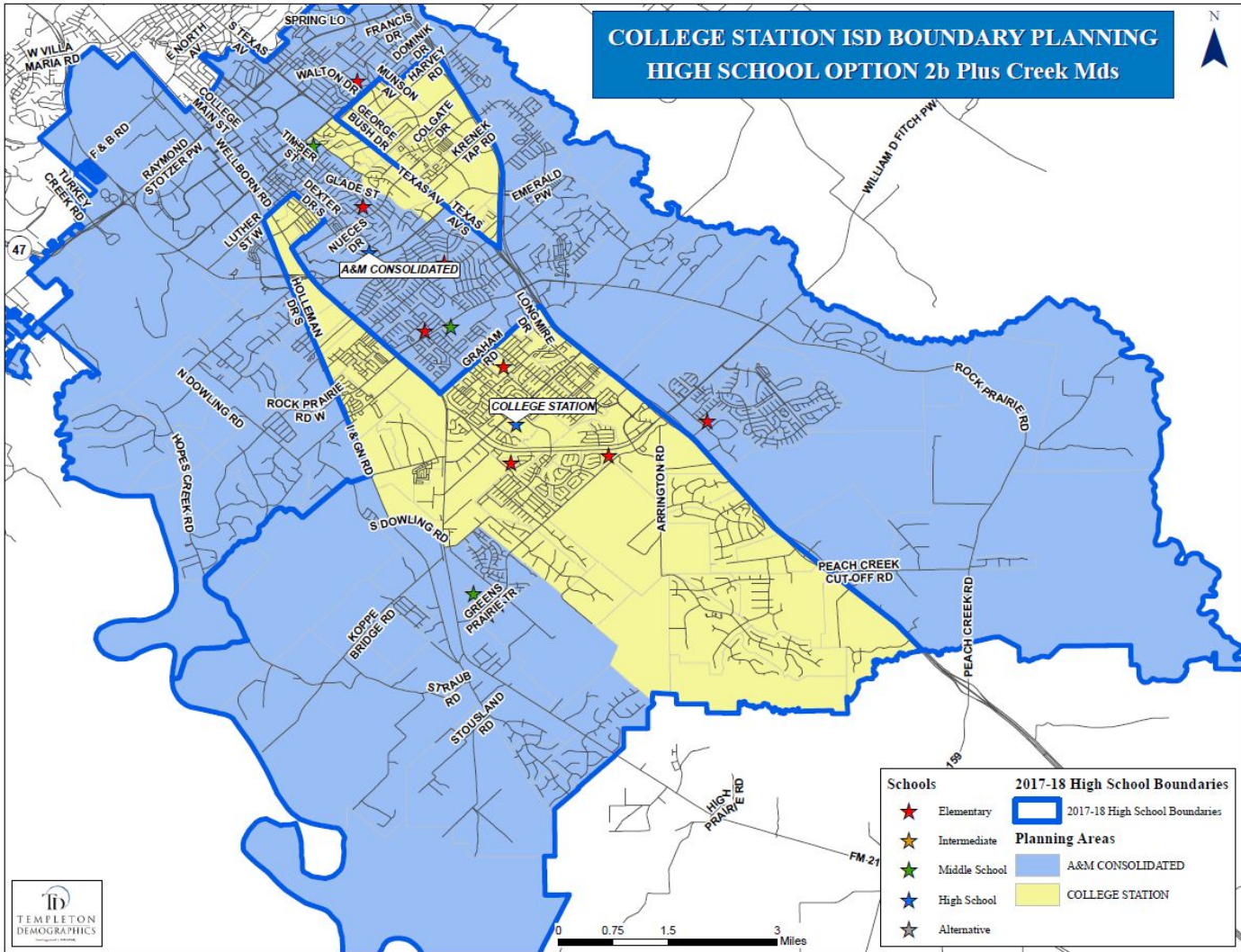
**Independent of zone changes*



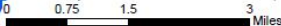
OPTION 2b + CREEK MEADOWS / EAST WELLBORN RD.

COLLEGE STATION ISD BOUNDARY PLANNING

HIGH SCHOOL OPTION 2b Plus Creek Mds



| Schools | | 2017-18 High School Boundaries | |
|------------|---------------|--------------------------------|--------------------------------|
| ★ (Red) | Elementary | | 2017-18 High School Boundaries |
| ★ (Yellow) | Intermediate | | A&M CONSOLIDATED |
| ★ (Green) | Middle School | | COLLEGE STATION |
| ★ (Blue) | High School | | |
| ★ (Grey) | Alternative | | |



OPTION 2b + CREEK MEADOWS / EAST WELLBORN RD.

COLLEGE STATION ISD

Plan 2b + Ck. Mds. & E. Wellborn High School Grade Report

5.1%

| SCHOOL | 8 | 9 | 10 | 11 | 12 | 8TH-11TH | 9TH-12TH | CAPACITY | UTILIZATION | ED | %ED |
|------------------|-----|-----|-----|-----|-----|----------|----------|----------|-------------|-----|-------|
| A&M CONSOLIDATED | 550 | 493 | 472 | 485 | 505 | 2,000 | 1,955 | 2,350 | 83.2% | 609 | 31.2% |
| COLLEGE STATION | 413 | 501 | 443 | 415 | 410 | 1,772 | 1,769 | 1,950 | 90.7% | 461 | 26.1% |

COLLEGE STATION ISD

Bond - CSHS

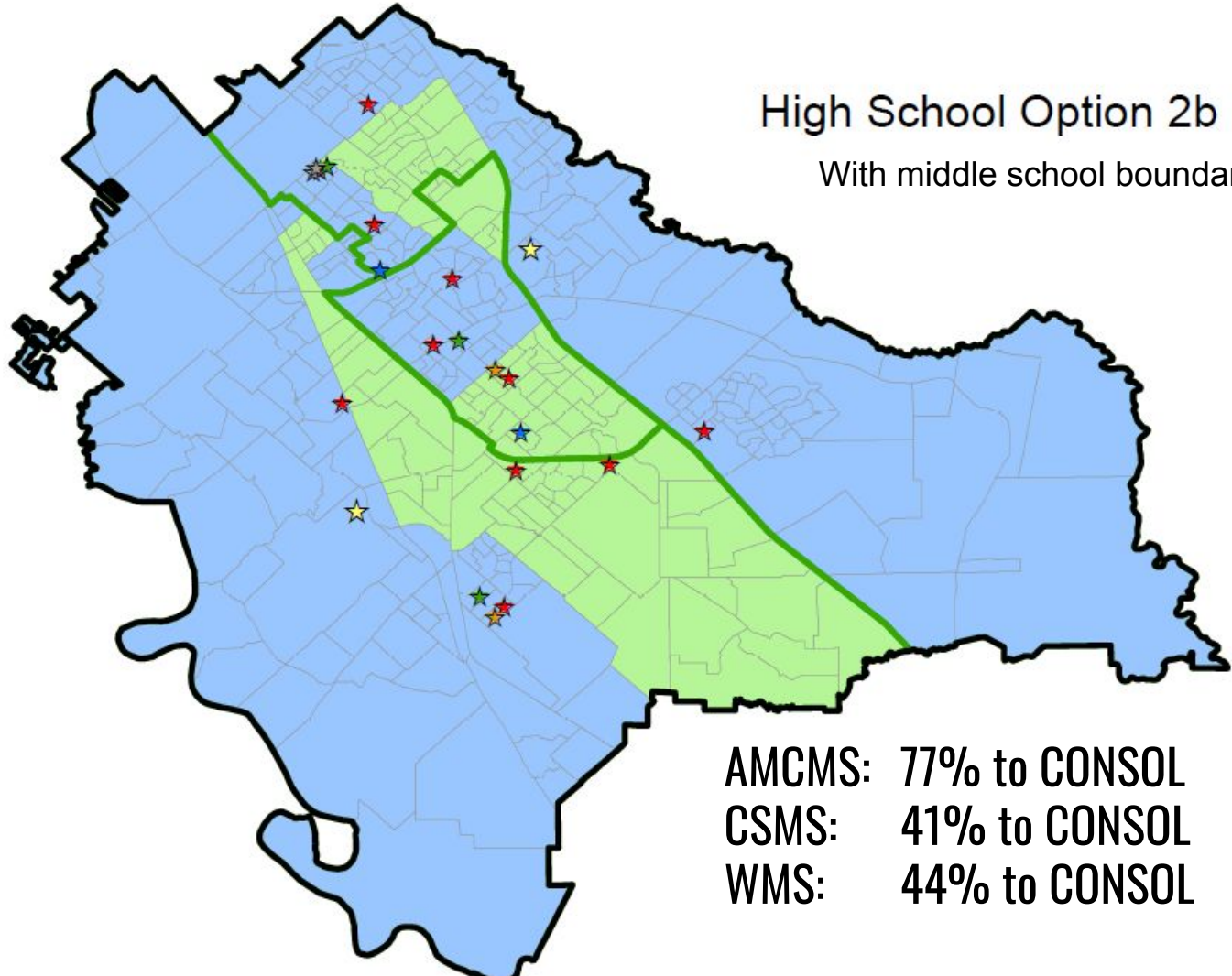
Bond - HS #3

Plan 2b + Ck. Mds. & E. Wellborn High School Forecast Report

| SCHOOL | CAPACITY | 2019/20 | 2020/21 | 2021/22 | 2022/23 | 2023/24 | 2024/25 | 2025/26 | 2026/27 | 2027/28 |
|------------------|----------|---------|---------|---------|---------|---------|---------|---------|---------|---------|
| A&M CONSOLIDATED | 2,350 | 2,017 | 2,099 | 2,240 | 2,343 | 2,458 | 2,548 | 2,584 | 2,594 | 2,623 |
| COLLEGE STATION | 1,950 | 1,928 | 1,960 | 2,053 | 2,223 | 2,316 | ★2,436 | 2,454 | 2,518 | 2,540 |

High School Option 2b + Ck. Mds.

With middle school boundary overlay



| | | |
|--------|---------------|-------------|
| AMCMS: | 77% to CONSOL | 23% to CSHS |
| CSMS: | 41% to CONSOL | 59% to CSHS |
| WMS: | 44% to CONSOL | 56% to CSHS |

PROJECTED TRANSPORTATION IMPACT - OPTION 2b + *CREEK MEADOWS / EAST WELLBORN RD.*

| AREA | CURRENT ROUTES | ADDED ROUTES w THIS OPTION | ADDED ROUTES 2019 GROWTH* | NET ADDS | TOTAL COSTS (@\$20 K/ ROUTE) |
|--|----------------|----------------------------|---------------------------|----------|------------------------------|
| ANDERSON ST | 0 | 2 HS ONLY | 0 | 2 | \$40 K |
| CREEK MEADOWS AREA / EAST WELLBORN RD. | 2 IS/MS/HS | 1 HS ONLY | 0 | 1 | \$ 20 K |
| WEST SIDE | 3 IS/MS/HS | 3 HS ONLY | 1 | 2 | \$40 K |

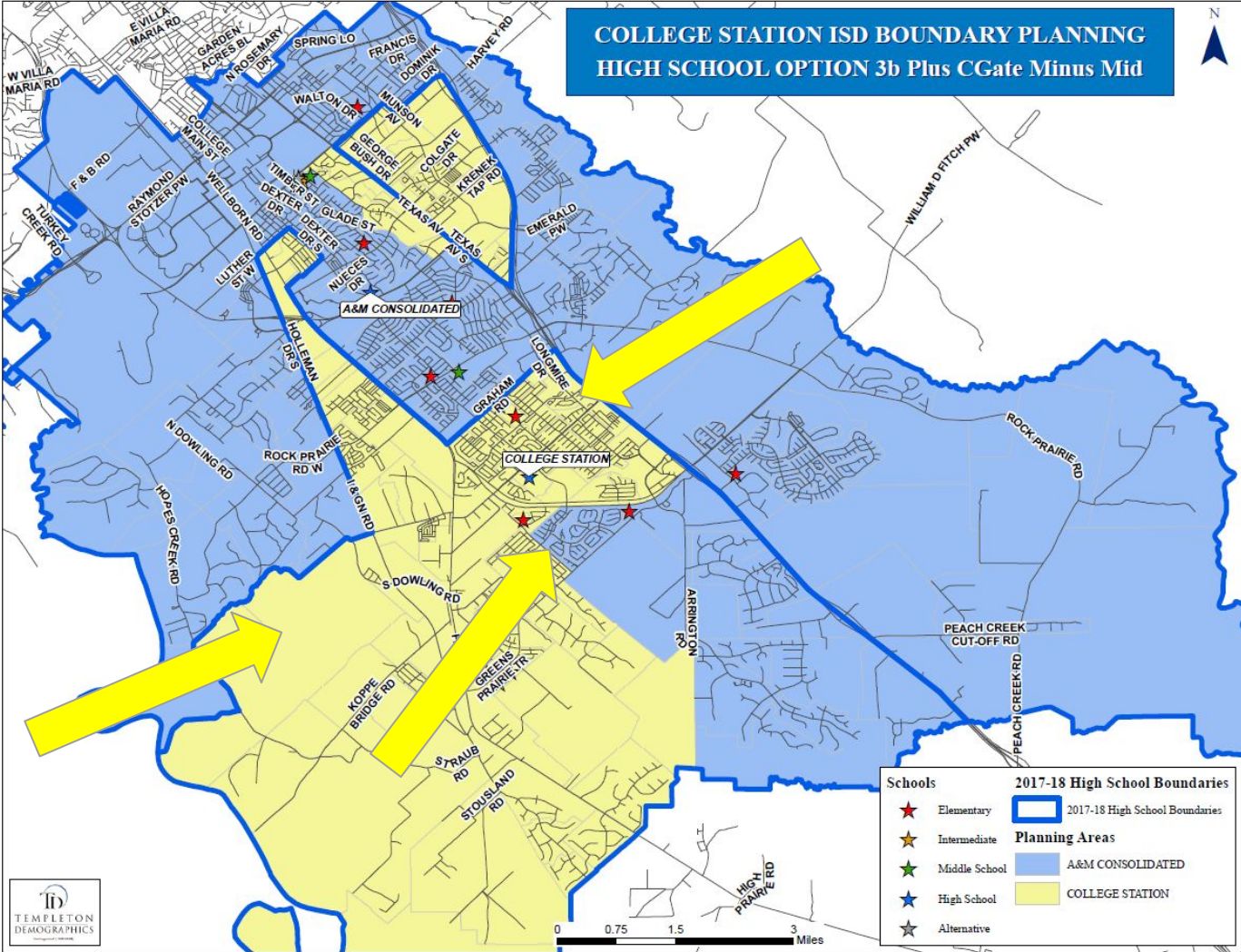
**Independent of zone changes*



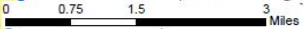
OPTION 3b + CG - MIDTOWN

**April 19, 2018
Board Workshop**

COLLEGE STATION ISD BOUNDARY PLANNING HIGH SCHOOL OPTION 3b Plus CGate Minus Mid



| Schools | | 2017-18 High School Boundaries | |
|---------|---------------|--------------------------------|--------------------------------|
| ★ | Elementary | | 2017-18 High School Boundaries |
| ★ | Intermediate | | Planning Areas |
| ★ | Middle School | | A&M CONSOLIDATED |
| ★ | High School | | COLLEGE STATION |
| ★ | Alternative | | |



COLLEGE STATION ISD

Plan 3b Plus CGate Minus Midtown High School Grade Report

0.5%

| SCHOOL | 8 | 9 | 10 | 11 | 12 | 8TH-11TH | 9TH-12TH | CAPACITY | UTILIZATION | ED | %ED |
|------------------|-----|-----|-----|-----|-----|----------|----------|----------|-------------|-----|-------|
| A&M CONSOLIDATED | 537 | 490 | 469 | 472 | 506 | 1,968 | 1,937 | 2,350 | 82.4% | 561 | 29.0% |
| COLLEGE STATION | 426 | 504 | 446 | 428 | 409 | 1,804 | 1,787 | 1,950 | 91.6% | 509 | 28.5% |

COLLEGE STATION ISD

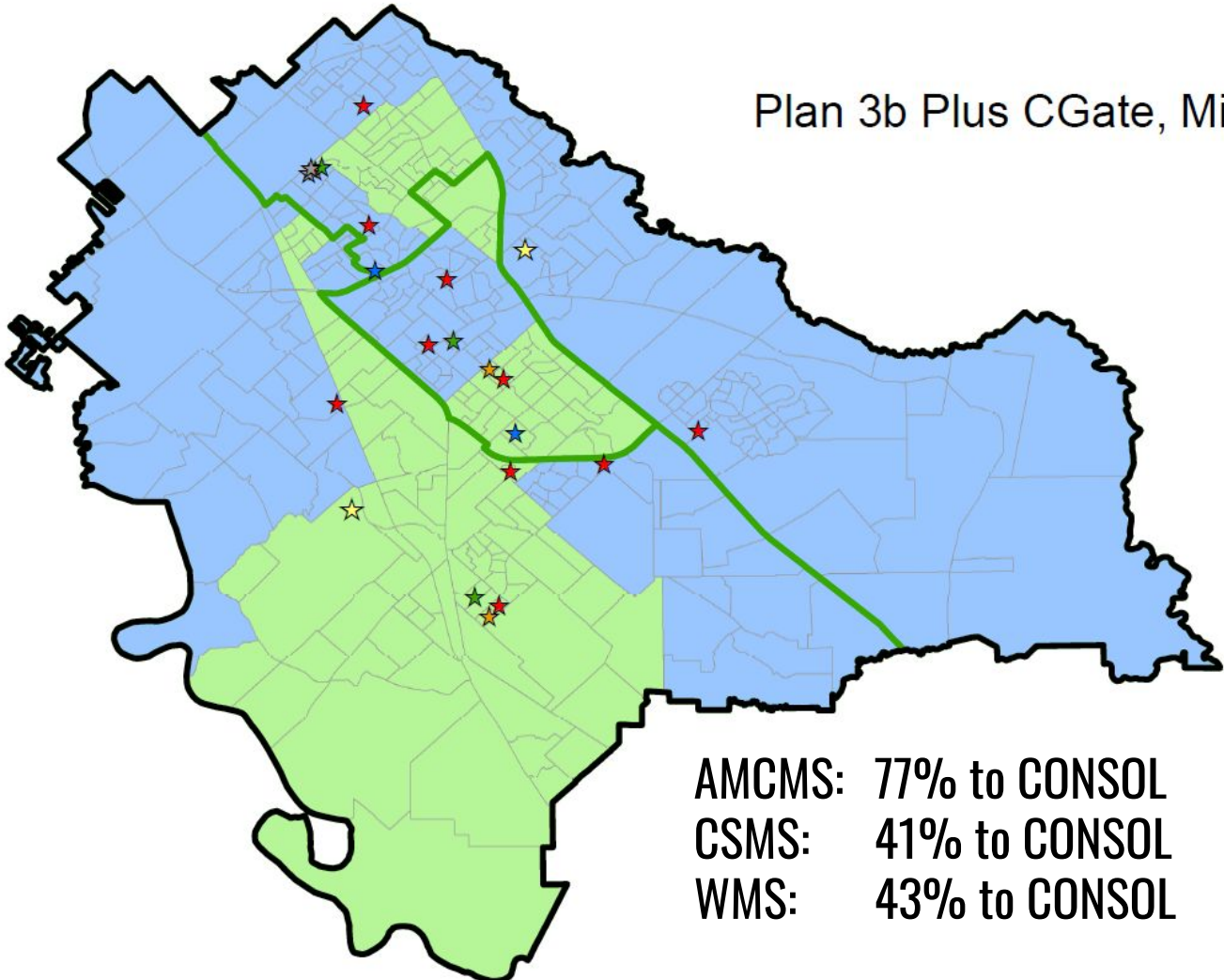
Plan 3b Plus CGate Minus Midtown High School Forecast Report

Bond - CSHS

Bond - HS #3

| SCHOOL | CAPACITY | 2019/20 | 2020/21 | 2021/22 | 2022/23 | 2023/24 | 2024/25 | 2025/26 | 2026/27 | 2027/28 |
|------------------|----------|---------|---------|---------|---------|---------|---------|---------|---------|---------|
| A&M CONSOLIDATED | 2,350 | 1,993 | 2,075 | 2,228 | 2,343 | 2,476 | 2,584 | 2,642 | 2,664 | 2,693 |
| COLLEGE STATION | 1,950 | 1,952 | 1,984 | 2,065 | 2,223 | 2,298 | ★2,400 | 2,396 | 2,448 | 2,470 |

Plan 3b Plus CGate, Minus Mid



| | | |
|--------|---------------|-------------|
| AMCMS: | 77% to CONSOL | 23% to CSHS |
| CSMS: | 41% to CONSOL | 59% to CSHS |
| WMS: | 43% to CONSOL | 57% to CSHS |

PROJECTED TRANSPORTATION IMPACT - OPTION 3b + CG - MIDTOWN

| AREA | CURRENT ROUTES | ADDED ROUTES w THIS OPTION | ADDED ROUTES 2019 GROWTH* | NET ADDS | TOTAL COSTS (@\$20 K/ ROUTE) |
|-------------------|----------------|----------------------------|---------------------------|----------|------------------------------|
| ANDERSON ST | 0 | 2 | 0 | 2 | \$40 K |
| INDIAN LAKES AREA | 2 IS/MS/HS | 1 HS ONLY | 0 | 1 | \$20 K |
| CASTLEGATE | 2 IS/MS/HS | 1 HS ONLY | 0 | 1 | \$ 20 K |

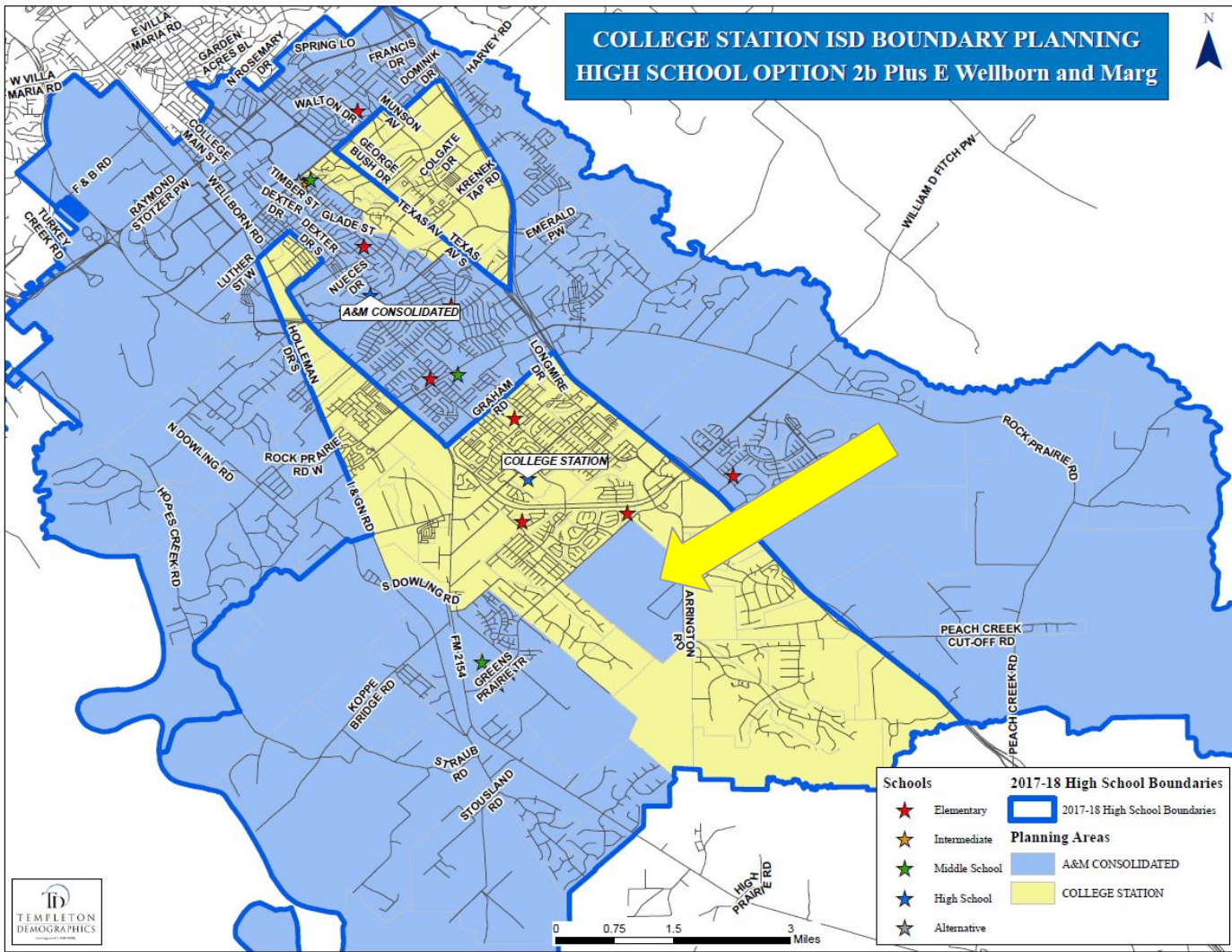
**Independent of zone changes*



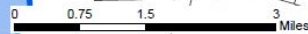
OPTION 2b + E. Wellborn + Margraves

**April 19, 2018
Board Workshop**

COLLEGE STATION ISD BOUNDARY PLANNING HIGH SCHOOL OPTION 2b Plus E Wellborn and Marg



| Schools | | 2017-18 High School Boundaries | |
|---------|---------------|--------------------------------|--------------------------------|
| | Elementary | | 2017-18 High School Boundaries |
| | Intermediate | Planning Areas | |
| | Middle School | | A&M CONSOLIDATED |
| | High School | | COLLEGE STATION |
| | Alternative | | |



COLLEGE STATION ISD

Plan 2b Plus E. Wellborn, Plus Marg. High School Grade Report 5.1%

| SCHOOL | 8 | 9 | 10 | 11 | 12 | 8TH-11TH | 9TH-12TH | CAPACITY | UTILIZATION | ED | %ED |
|------------------|-----|-----|-----|-----|-----|----------|----------|----------|-------------|-----|-------|
| A&M CONSOLIDATED | 550 | 493 | 472 | 485 | 505 | 2,000 | 1,955 | 2,350 | 83.2% | 609 | 31.2% |
| COLLEGE STATION | 413 | 501 | 443 | 415 | 410 | 1,772 | 1,769 | 1,950 | 90.7% | 461 | 26.1% |

COLLEGE STATION ISD

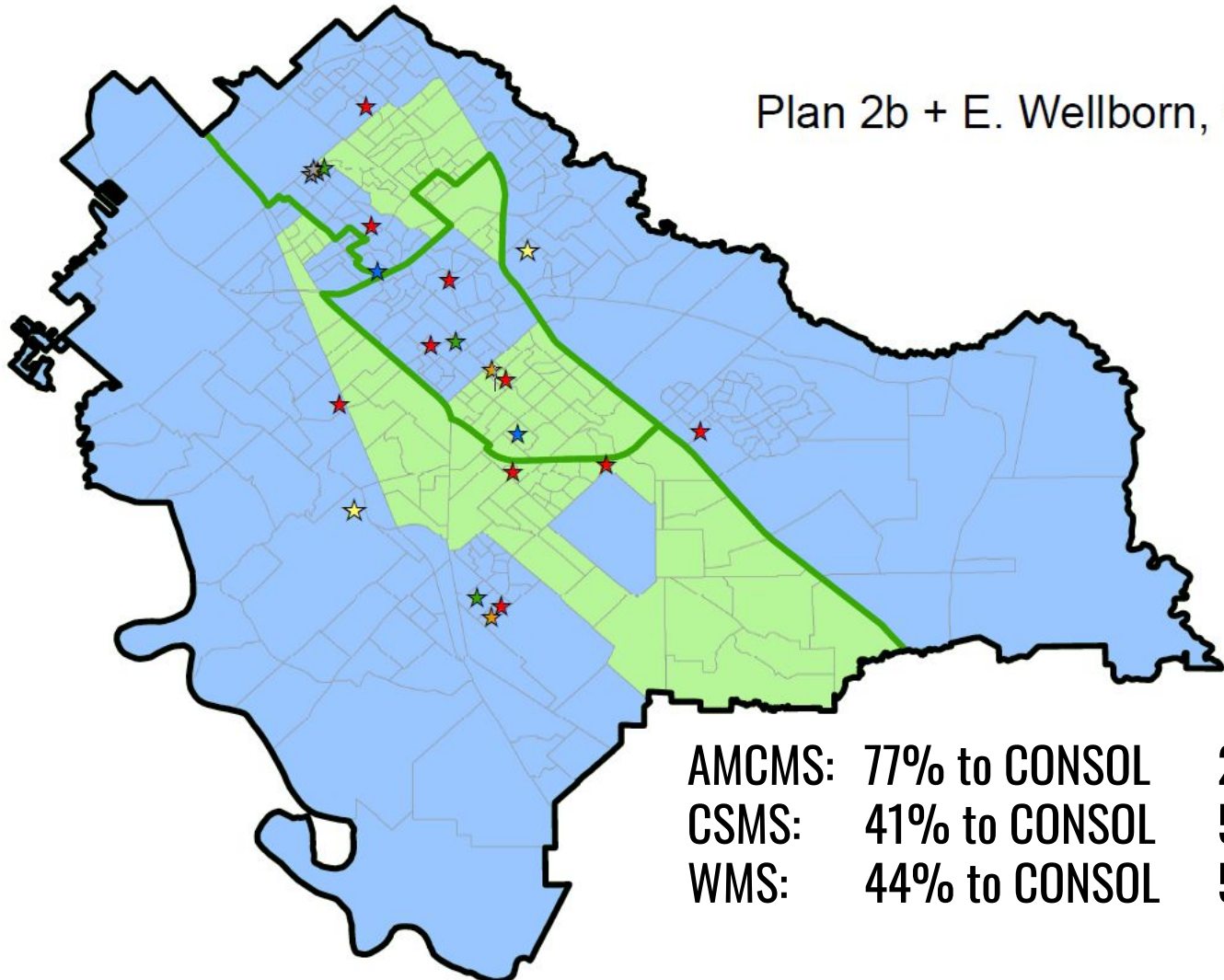
Plan 2b Plus E. Wellborn, Plus Marg. High School Forecast Report

Bond - CSHS

Bond - HS #3

| SCHOOL | CAPACITY | 2019/20 | 2020/21 | 2021/22 | 2022/23 | 2023/24 | 2024/25 | 2025/26 | 2026/27 | 2027/28 |
|------------------|----------|---------|---------|---------|---------|---------|---------|---------|---------|---------|
| A&M CONSOLIDATED | 2,350 | 2,017 | 2,103 | 2,255 | 2,375 | 2,511 | 2,624 | 2,681 | 2,702 | 2,732 |
| COLLEGE STATION | 1,950 | 1,928 | 1,956 | 2,038 | 2,191 | 2,263 | ★2,360 | 2,357 | 2,410 | 2,431 |

Plan 2b + E. Wellborn, + Marg.



| | | |
|--------|---------------|-------------|
| AMCMS: | 77% to CONSOL | 23% to CSHS |
| CSMS: | 41% to CONSOL | 59% to CSHS |
| WMS: | 44% to CONSOL | 56% to CSHS |

PROJECTED TRANSPORTATION IMPACT - OPTION 2b + EAST WELLBORN + MARGRAVES

| AREA | CURRENT ROUTES | ADDED ROUTES w THIS OPTION | ADDED ROUTES 2019 GROWTH* | NET ADDS | TOTAL COSTS (@\$20 K/ ROUTE) |
|--|----------------|----------------------------|---------------------------|----------|------------------------------|
| ANDERSON ST | 0 | 2 HS ONLY | 0 | 2 | \$40 K |
| CREEK MEADOWS AREA / EAST WELLBORN RD. | 2 IS/MS/HS | 1 HS ONLY | 0 | 1 | \$ 20 K |
| WEST SIDE | 3 IS/MS/HS | 3 HS ONLY | 1 | 2 | \$40 K |
| MARGRAVES | 0 | 0 | 0 | 0 | \$ 0 |

**Independent of zone changes*



DISCUSSION